

Comes Standard with all Ground Force Worldwide Water Solutions:

- (6) Preset Programs for Easy Operation
- Multiple Spray Functions
- Bluetooth Compatible for Easy Support





The demand for precise water delivery is imperative in today's mining and construction industries. Designed to offer ease-of-operation, Ground Force WCS is the safe and effective solution for dust suppression.

The **Ground Force WCS** utilizes Electronic Control Systems IQAN® System Products. Display features optical-bonded display glass for improved readability and night-time operation, which also helps eliminate light refraction. The touchscreen interface offers easy-operation when manually changing spray functions on the fly. Water is regulated through ground speed control, which adjusts water delivery based on truck speed and offers precision water delivery.

The Ground Force Water Control System display module and controller allow the operator to continually adjust the water delivery based on current conditions, without having to stop the truck or return to the shop to change operating parameters.

- Rugged, heavy-duty design
- Touchscreen for interactive use
- Sealed components for durability
- Easy-to-operate controls



GROUND FORCE WCS SPRAY FEATURES

Timed Watering: Wet-strip/dry-strip watering allows pre-set control of “on” and “off” for spray heads to conserve water and avoid over watering.



Staggered Watering: Staggered mode allows for right - left - right watering to ensure one drive tire is always on dry ground for increased stability on steep terrain.



Ground Speed Spraying: Spray volume is based on water truck speed allowing for reduced water delivery when speeds are reduced and increased water delivery as truck speed increases. This ensures water delivery is uniform and avoids over and under watering.

Manual Spraying: Spray settings can be manually turned off and on utilizing the touchscreen interface at anytime during operation for optimal control.



GROUND FORCE WCS FEATURES & BENEFITS

Preset Programs: Ground Force WCS offers 6 preset programs to allow advanced planning for precise water delivery. Presets are easily customized using included instruction manual. Presets allow operators to focus on safe operation and avoid distractions while driving.

Micro Controller: Designed of heavy-duty fiberglass construction with an overlapping waterproof cover, this (NEMA certified) enclosure protects the micro-controller and wiring assemblies. The rugged Parker® micro-controller powers the signal to spray components for reliable hydraulic operation. Designed with SAE J1127-rated electrical components with circuit protection and waterproof Deutsch connectors, this system is both reliable and robust.

Reliable Components: Ground Force WCS works in conjunction with your Ground Force water pump and other spray components. With sealed in-cab components and a strategically designed exterior micro box, this system is the most robust on the market.

Innovative Troubleshooting: The Ground Force WCS is bluetooth capable, allowing for easy troubleshooting and configuration changes. This technology is app-based and accessible through wifi anywhere in the world.

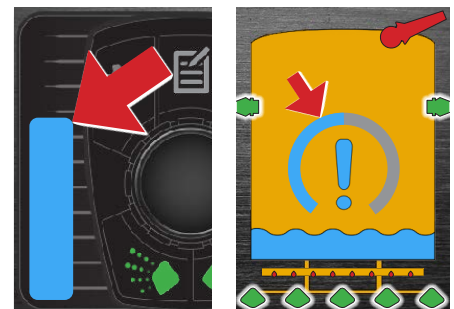
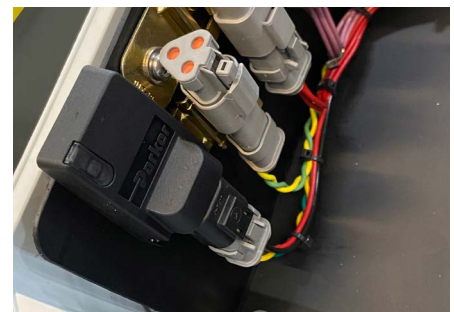
Water Level Indicator: Ground Force WCS uses a water level sensor to measure real-time water levels in the tank. A bar graph on the left of the display screen will show the current water level in the tank.

Low-Level Warning: An integrated low-level warning function on the display directs the water pump to shut off when water levels are unsafe for water pump operation. When this level is reached, the pump will automatically shut off until the tank is refilled and the pump can safely operate again.

Low-Level Bypass: Low-level bypass allows the water pump to be manually restarted and will run for 15 seconds. This function allows the tank to be quickly emptied as needed.

Retro-fit Kits: The Ground Force WCS is available as a retro-fit kit to upgrade existing tanks, or to retro-fit competitive tanks. Benefits include:

- Installation Guidance
- Operator Training Video
- Operation Manual & Schematics
- In-Cab Quick Start Guide
- Parts Commonality
- Ground Force Field Service Training upon request





GROUND FORCE

WATER CONTROL SYSTEM

Ground Force WCS comes **STANDARD** with all Ground Force Water Solutions.

Contact us today for more information.



GROUND FORCE

WORLDWIDE

WORLD'S FINEST MINE SUPPORT EQUIPMENT

6001 E. Seltice Way | Post Falls, ID 83854 U.S.A.
+1.208.664.9291 | Fax 208.664.9475
solutions@gfworldwide.com



» FOR MORE INFORMATION

GFWORLDWIDE.COM