

**GROUND FORCE**  
WORLDWIDE  
WORLD'S FINEST MINE SUPPORT EQUIPMENT

**ARTICULATED FUEL  
& LUBE TRUCKS**



**ADVANCED FUEL DELIVERY WITH  
INCREASED MANEUVERABILITY**

# GROUND FORCE WORLDWIDE ARTICULATED FUEL & LUBE TRUCKS

# PROVEN IN THE MOST EXTREME TERRAIN

Ground Force Articulated Fuel & Lube Trucks are engineered for increased maneuverability in rugged off-road terrain. Our fuel and lube trucks are adaptable to fit any articulated chassis on the market and are built HEAVY-DUTY. They are designed specifically for delivering a wide range of fuel and lube products directly to your production equipment.

We offer many configurations and custom features, as well as heated and enclosed fuel and lube trucks for extreme and cold weather applications. Designed with a low center of gravity and safety features such as roll-over protection, the Ground Force Articulated Fuel and Lube Trucks are PROVEN in the most extreme terrain. Ground Force Worldwide is the WORLD LEADER in Articulated Fuel and Lube Trucks, with 200+ trucks in mines across the world today.



Heated & Enclosed for  
Extreme Conditions



Capacities may vary depending on chassis size, weight distribution, and custom requirements.

## ARTICULATED FUEL & LUBE BODIES:

CLASS	CAPACITY	MODEL
<b>OPEN DECK FUEL &amp; LUBE TRUCKS / ENCLOSED FUEL &amp; LUBE TRUCKS (Arctic Applications)</b>		
25 T (23 mt)	Diesel: 2,500 gal. (9,463 L) Lubricants: 930 gal. (3,520 L) Grease: 750 lb. (340 kg)	25FL/EFL
30 T (28 mt)	Diesel: 3,500 gal. (13,248 L) Lubricants: 1,200 gal. (4,542 L) Grease: 750 lb. (340 kg)	30FL/EFL
35 T (32 mt)	Diesel: 4,000 gal. (15,141 L) Lubricants: 1,500 gal. (5,678 L) Grease: 1,100 lb. (499 kg)	35FL/EFL
40 T (39 mt)	Diesel: 5,000 gal. (18,927 L) Lubricants: 1,500 gal. (5,678 L) Grease: 1,100 lb. (499 kg)	40FL/EFL
45 T (41 mt)		45FL/EFL



## SPECIAL FEATURES

- Fuel delivery 120-300 GPM (454-1,135 LPM)
- Full product filtration
- Fully baffled product tanks
- Product metering systems
- Product tank level gauges



## OPERATOR EASE & SAFETY

- Ground-level/remote-fill for all products
- Micro-controller is bluetooth capable for easy troubleshooting and configuration changes by app-based technology where wifi is present
- New and used filter storage
- Enclosed ground-level rear and/or side reel compartments
- Mine-site lighting packages
- Anti-slip walkways and handrails



## PRODUCT AVAILABILITY & OPTIONS

- Diesel fuel capacity from 2,000 to 5,000 gal. (7,570 - 18,927 L)
- New oil and coolant capacity from 500 to 1,500 gal. (1,892 - 5,678 L)
- Grease drum or large, removable bin available
- Heated product tanks available
- Spring, Hydraulic, and Electric reel available
- Enclosed & heated body for arctic applications
- Used oil and coolant tanks
- Ground Force chassis frame-stretch option
- Air compressor with reservoir tank
- Optional high-pressure wash system
- Systems powered by chassis hydraulics or diesel-driven Auxiliary Power Unit (APU)
- Kidney-loop filtration systems
- Roll-over protection system

\*Ground Force Field Service Available

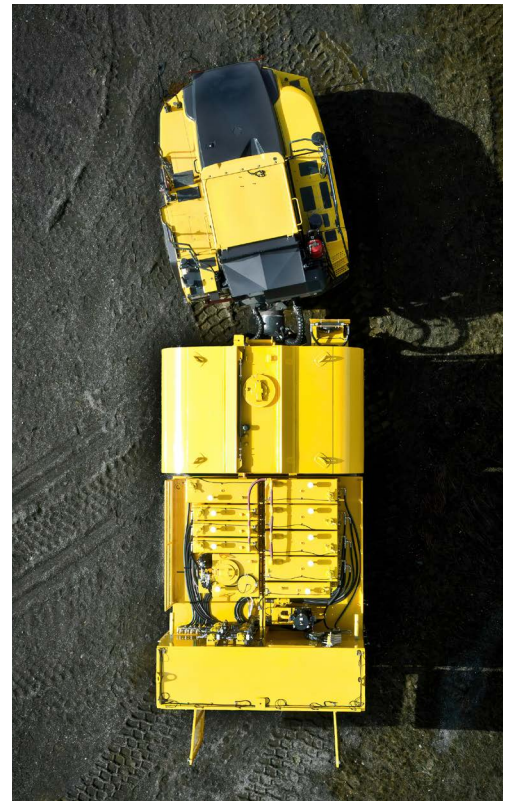
## OPTIONAL FLUID LEVEL MONITORING SYSTEM

- In-cab fluid level monitoring for all product tanks
- Digitally controlled monitor with backlit LCD for low-light operations
- Touch screen functionality and expandable system components available for alternate locations



All dimensions, specifications, and product availability are subject to change based on continual product improvement and customer request.

For more information & pricing contact  
your Ground Force Major Account Manager.



**THE GROUND FORCE DIFFERENCE**  
Innovative & Diverse Products  
Loyalty & Devotion to our Customers  
Global Service & Support

**GROUND FORCE**  
WORLDWIDE  
WORLD'S FINEST MINE SUPPORT EQUIPMENT



6001 E. Seltice Way  
Post Falls, ID 83854 U.S.A.  
+1.208.664.9291 | Fax 208.664.9475  
[solutions@gfworldwide.com](mailto:solutions@gfworldwide.com)  
[gfworldwide.com](http://gfworldwide.com)