

GROUND FORCE
WORLDWIDE
WORLD'S FINEST MINE SUPPORT EQUIPMENT

ARTICULATED WATER TRUCKS

5,000 - 9,500 gallons
18,927 - 35,961 liters



**LEADING THE INDUSTRY
IN EFFICIENCY & DURABILITY**

GROUND FORCE WORLDWIDE ARTICULATED WATER TRUCKS

MANUFACTURED FOR LONGEVITY

Ground Force Worldwide Articulated Water Trucks offer the same rugged durability as our rigid frame models, and are the perfect solution for the most demanding projects in all types of mining and construction applications.

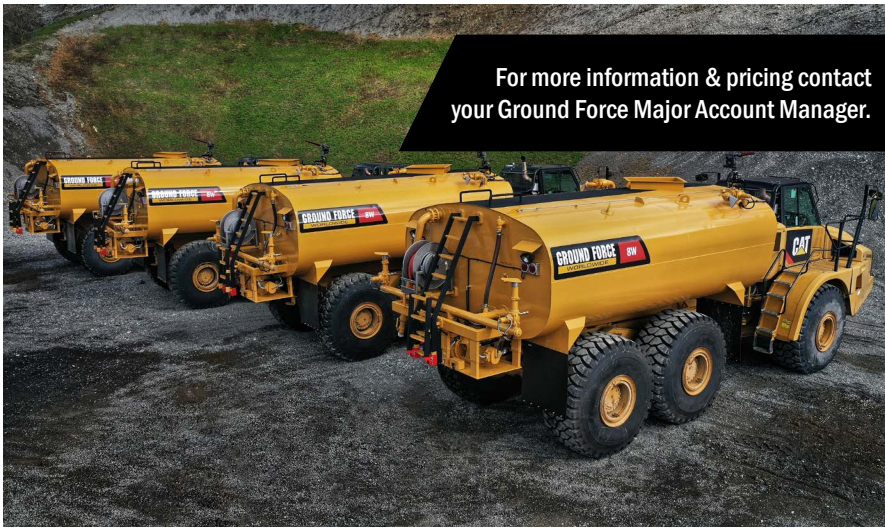


Capacities may vary depending on chassis size, weight distribution, and custom requirements.

ARTICULATED WATER TANKS:

CLASS	CAPACITY	MODEL
25 T (23 mt)	5,000 G (18,927 L)	5W
30 T (27 mt)	6,000 G (22,712 L)	6W
35 T (32 mt)	7,000 G (26,497 L)	7W
40 T (36 mt)	8,000 G (30,283 L)	8W
45 T (41 mt)	9,000 G (34,068 L)	9W
45 T (41 mt)	9,500 G (35,961 L)	9.5W

For more information & pricing contact your Ground Force Major Account Manager.



TANK SPECIFICATIONS

- Dual-radius semi-elliptical design
- Built for heavy construction & mining application
- Endo-skeleton, designed with structural I-beams for extended life and stability
- Fully baffled; longitudinal and transverse
- Engineered tub-surge control system
- Designed to achieve lowest center of gravity
- Banded manway with safety grate
- Ladder with safety rail
- Anti-skid top walkway with PPE tie-off
- Sump with drain for clean out
- Sealed weatherproof wiring
- LED tail, stop and turn lights



*Ground Force Field Service Available

GROUND FORCE WATER CONTROL SYSTEM (WCS)

See our online WCS Specalog for a complete range of options and specifications.

- Externally mounted, high performance water pump
- Digital in-cab control monitor
- Programmable menu with (4) preset settings
 - ✓ Intermittent spray settings for wet-strip, dry-strip watering
 - ✓ On-the-fly, one-touch control for change of individual spray heads
 - ✓ Backlit LCD screen for low-light operations
- Integration of an extensive range of options
 - ✓ Rear spray bar with (4) staggered fan-sprays
 - ✓ Side sprays, hose reels, water cannons, & gravity dump
- Heated component enclosure available for arctic applications
- Optional fire foam system



WCS
SPECALOG



HOW TO
OPERATE



All dimensions, specifications, and product availability are subject to change based on continual product improvement and customer request.

Ground Force Engineers, Manufactures & Supports Water Tanks for any chassis brand or class size on the market today.



THE GROUND FORCE DIFFERENCE
Innovative & Diverse Products
Loyalty & Devotion to our Customers
Global Service & Support

GROUND FORCE
WORLDWIDE
WORLD'S FINEST MINE SUPPORT EQUIPMENT



6001 E. Seltice Way
Post Falls, ID 83854 U.S.A.
+1.208.664.9291 | Fax 208.664.9475
solutions@gfworldwide.com
gfworldwide.com