

GROUND FORCE
WORLDWIDE
WORLD'S FINEST MINE SUPPORT EQUIPMENT

DUMP BODIES

40 - 400 tons
36 - 362 metric tons



**MORE PAYLOAD AND
REDUCED CARRYBACK**

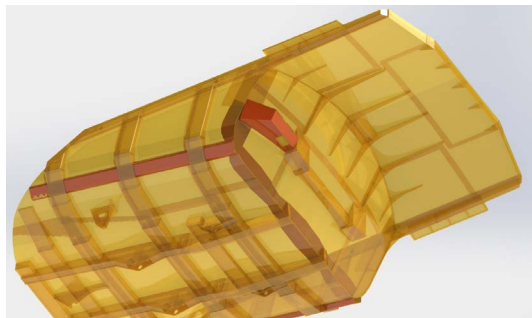
GROUND FORCE WORLDWIDE RIGHT WEIGHT DUMP BODIES

OVERLAP DESIGN FOR QUICK RELEASE

Our Ground Force RWB Dump Bodies (Right Weight Bodies) are engineered to increase your mine production and profitability. Ground Force Dump Bodies are custom-designed, engineered, and built the “right weight” for your specific mining application.

Ground Force Dump Bodies utilizes an overlapping shell design (patent pending), which lessens the amount of external structural support required without compromising overall strength. The overlapping design steps down towards the rear of the body allowing for a cascading effect and a quicker material discharge with reduced carry-back.

All of our bodies go through Finite Element Analysis to ensure strength, durability and longevity. This helps ensure life expectancy in rugged applications and extreme conditions.



Designs for all chassis on the market today.

DUMP BODIES:

CLASS	CAPACITY
40 - 400 T (36 - 362 mt)	Ground Force Dump Bodies are PURPOSE-DESIGNED & BUILT, offering bodies for multiple applications. Many body types available: Coal, Coal Combo, Overburden, Ore, Heated, Special Use

*Capacities vary depending on chassis size, weight distribution, and material density. All Ground Force Worldwide RWB Dump Bodies offer a variety of configurations and liner packages with the benefit of being ultra-light weight in design.



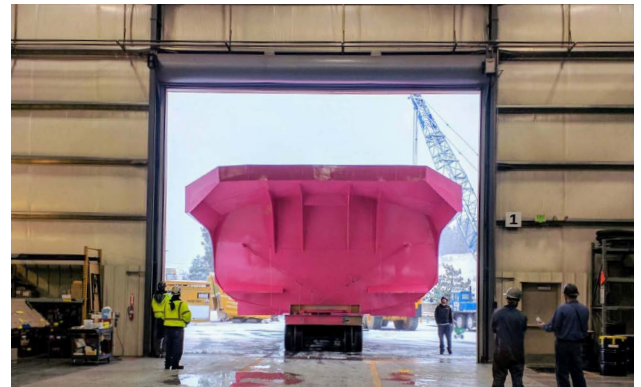
STANDARD SPECIFICATIONS

- Innovative semi-elliptical dump bed design for maximum strength and quick material release
- PURPOSE-DESIGNED & MANUFACTURED body for maximum payload
- Designed to minimize visual interference during operation
- Body constructed of 450 - 500 bhn material
- Sub-frame and bolsters constructed of 100 ksi material
- Reinforced and “dished shape” front head for strength & protection
- Engineered with the lowest possible center of gravity
- Reduced load impact on operator
- Heated bodies available for cold weather applications
- Rock ejector brackets available

*Ground Force Field Service Available

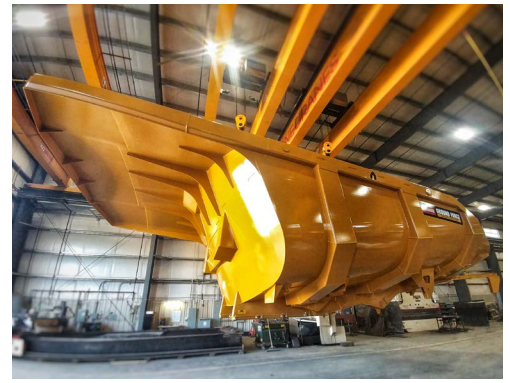
FEATURES & BENEFITS

- Increased payload - Lightweight design allows for more payload
- Resists carry-back - Less tire wear, decreased fuel consumption, reduced chassis wear
- Reduces spill rock - Less cleanup on haul roads and dumps
- Quick material discharge - Faster cycle times
- Centered load (due to semi-elliptical design)
 - ✓ Design is operator friendly with large target area
 - ✓ Less wear and tear on tires and struts with centered load
- Multiple shipping options: complete or in up to 4 pieces, with sub-frame and rear pin bosses pre-mounted and line-bored before delivery
- Multiple liner packages / configurations
- Full onsite evaluations available



All dimensions, specifications and product availability are subject to change based on continual product improvement and customer request.

For more information & pricing contact
your Ground Force Major Account Manager.



THE GROUND FORCE DIFFERENCE
Innovative & Diverse Products
Loyalty & Devotion to our Customers
Global Service & Support

GROUND FORCE
WORLDWIDE
WORLD'S FINEST MINE SUPPORT EQUIPMENT



6001 E. Seltice Way
Post Falls, ID 83854 U.S.A.
+1.208.664.9291 | Fax 208.664.9475
solutions@gfworldwide.com
gfworldwide.com