

**GROUND FORCE**  
**WORLDWIDE**  
WORLD'S FINEST MINE SUPPORT EQUIPMENT

# FOGGER WATER TRUCKS

13,000 - 60,000 gallons  
49,210 - 227,124 liters



**COMBATING YOUR MOST  
CHALLENGING DUST CONCERNS**

# GROUND FORCE WORLDWIDE FOGGER TRUCKS

# DESIGNED TO MITIGATE LARGE DUST CLOUDS

Introducing a new way to tackle dust suppression and dust clouds, utilizing the science of water molecule size to obtain optimum performance for your water management program. The Ground Force Fogger Trucks offers (2) misting cannons (creating a fog-like mist) as a solution to mitigate dust. Ground Force Fogger Trucks are perfect for use at dump sites, fixed roads, and other challenging areas .

The misting system integrates into the heavy-duty Ground Force body on the rear deck assembly, which is engineered into the framework. This decking system houses the misting cannons, generator, and pumps. The mist generated catches the dust particulates out of the air, utilizing significantly less water than a typical water spray head. They blow water molecules or “mist” over 230 feet away, offering the ability to tackle large dust clouds that reduce visibility and create issues for neighboring towns and highways.

The Ground Force Fogger tank is designed for a mobile application but can also be positioned stationary, allowing the misting cannons to run off a power pack independently.



Capacities may vary depending on chassis size, weight distribution, and custom requirements.

## FOGGER WATER TANKS:

CLASS	CAPACITY	MODEL
100 T (90 mt)	13,000 G (49,210 - 75,708 L)	13WF
150 T (136 mt)	25,000 G (94,635 L)	25W
200 T (181 mt)	32,000 G (121,133 L)	32W
240 T (217 mt)	45,000 G (170,343 L)	45W
400 T (363 mt)	60,000 G (227,124 L)	60W



For more information & pricing contact your Ground Force Major Account Manager.

TECK ELKVIEW OPERATIONS

**TANK SPECIFICATIONS**

- Dual-radius semi-elliptical design
- Heavy-duty rear deck assembly engineered into framework
- Misting cannons with electric drive water primer pumps
- 135kw Genset (runs misting cannons independent of chassis)
- Endo-skeleton, designed with structural I-beams for extended life and stability
- Fully baffled: longitudinal and transverse
- Engineered tub-surge control system
- Designed to achieve lowest center of gravity
- Banded manway with safety grate
- Ladder with safety rail
- Anti-skid top walkway with PPE tie-off
- Sump with drain for clean out
- Sealed weatherproof wiring
- LED tail, stop, and turn lights

\*Ground Force Field Service Available



TECK ELKVIEW OPERATIONS

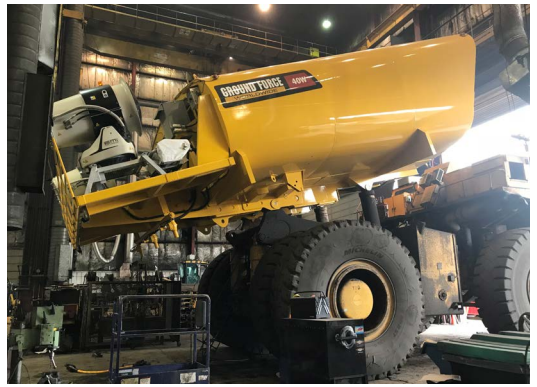
**GROUND FORCE WATER CONTROL SYSTEM (WCS)**

See our online brochure for a complete range of options and specifications.

- Externally mounted, high performance water pump
- Digital in-cab control monitor
- Programmable menu with (4) preset spray settings
  - ✓ Intermittent spray settings for wet-strip, dry-strip watering
  - ✓ On-the-fly, one-touch control for change of individual spray heads
  - ✓ Backlit LCD screen for low-light operations
- Integration of an extensive range of options
  - ✓ Rear spray bar with (4) staggered fan-sprays
  - ✓ Side sprays, hose reels, water cannons, & gravity dump
- Cannon controls and electrical panel
- Optional fire foam system

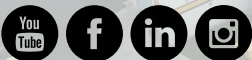


All dimensions, specifications, and product availability are subject to change based on continual product improvement and customer request.



**THE GROUND FORCE DIFFERENCE**  
Innovative & Diverse Products  
Loyalty & Devotion to our Customers  
Global Service & Support

**GROUND FORCE**  
**WORLDWIDE**  
WORLD'S FINEST MINE SUPPORT EQUIPMENT



6001 E. Seltice Way  
Post Falls, ID 83854 U.S.A.  
+1.208.664.9291 | Fax 208.664.9475  
[solutions@gfworldwide.com](mailto:solutions@gfworldwide.com)  
[gfworldwide.com](http://gfworldwide.com)