

GROUND FORCE
WORLDWIDE
WORLD'S FINEST MINE SUPPORT EQUIPMENT

FUEL ONLY

2,000 - 52,000 gallons
7,570 - 196,841 liters



**WHEN BULK FUEL IS
ALL YOU NEED**

GROUND FORCE WORLDWIDE FUEL ONLY TRUCKS

MAXIMIZE YOUR FUEL CAPACITY

Ground Force Fuel Trucks range in capacity from 2,000 gal. (7,570 L) to in excess of 52,000 gal. (196,841 L). They can be mounted onto virtually any chassis available to meet your needs. We manufacture extreme-service fuel bodies with the ruggedness and reliability that has been proven, world-wide, throughout the mining industry.



Capacities may vary depending on chassis size, weight distribution, and custom requirements.

FUEL ONLY BODIES:

CLASS	CAPACITY	MODEL
FUEL ONLY TRUCKS		
Heavy-Duty Tandem-Axle	Diesel: 2,000 - 5,000 gal. (7,570 - 18,927 L)	FT
25 T (23 mt)	Diesel: 5,000 gal. (18,927 L)	25F
30 T (28 mt)	Diesel: 6,000 gal. (22,712 L)	30F
35 T (32 mt)	Diesel: 7,000 - 8,000 gal. (26,497 - 30,283 L)	35F
40 T (36 mt)	Diesel: 9,000 - 10,000 gal. (34,068 L - 37,854 L)	40FL
60 T (55 mt)	Diesel: 13,000 gal. (49,210 L)	60FL
70 T (64 mt)	Diesel: 15,000 gal. (56,781 L)	70FL
100 T (90 mt)	Diesel: 18,000 - 20,000 gal. (68,137 - 75,708 L)	100FL
150 T (136 mt)	Diesel: 25,000 - 32,000 gal. (94,635 - 121,133 L)	150FL
200 T (181 mt)	Diesel: 35,000 - 40,000 gal. (132,489 - 151,416 L)	200FL
250 T (227 mt)	Diesel: 45,000 - 52,000 gal. (170,343 - 196,841 L)	250FL



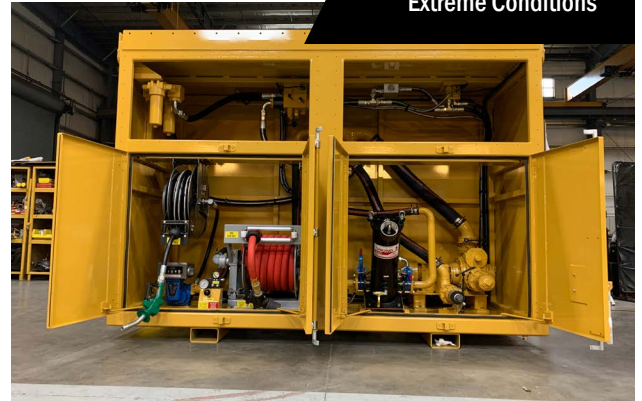
Heated Fuel Only for Extreme Conditions

SPECIAL FEATURES

- Fuel delivery 20-300 GPM (75-1,135 LPM)
- Full product filtration
- Fully-baffled product tanks
- Product metering systems
- Product tank level gauges

OPERATOR EASE & SAFETY

- Ground-level/remote-fill for fuel
- Micro-controller is bluetooth capable for easy troubleshooting and configuration changes by app-based technology where wifi is present.
- New and used filter storage
- Enclosed ground level rear reel compartment
- Mine-site lighting packages
- Anti-slip walkways and handrails



PRODUCT AVAILABILITY & OPTIONS

- Diesel capacity from 2,000 to 52,000 gal. (7,570 to 196,841 L)
- Spring, Hydraulic, and Electric reel available
- Enclosed & heated body for arctic applications
- Systems powered by chassis hydraulics or diesel-driven Auxiliary Power Unit (APU)
- Kidney-loop filtration systems
- Roll-over protection system

*Ground Force Field Service Available

OPTIONAL FLUID LEVEL MONITORING SYSTEM

- In-cab fluid level monitoring for all product tanks
- Digitally controlled monitor with backlit LCD for low-light operations
- Touch screen functionality and expandable system components available for alternate locations





THE GROUND FORCE DIFFERENCE
Innovative & Diverse Products
Loyalty & Devotion to our Customers
Global Service & Support



GROUND FORCE
WORLDWIDE
WORLD'S FINEST MINE SUPPORT EQUIPMENT



6001 E. Seltice Way
Post Falls, ID 83854 U.S.A.
+1.208.664.9291 | Fax 208.664.9475
solutions@gfworldwide.com
gfworldwide.com