

GROUND FORCE
WORLDWIDE
WORLD'S FINEST MINE SUPPORT EQUIPMENT

WATER PULLS

5,000 - 12,000 gallons
18,927 - 45,424 liters



**EFFECTIVE & EFFICIENT WATERING
WITH EASE OF OPERATION**

GROUND FORCE WORLDWIDE WATER PULLS

MANUFACTURED FOR SAFETY & EASE OF USE

Ground Force Worldwide Water Pulls come in a variety of models ranging in size from 5,000 gal. (18,927 L) to 12,000 gal. (45,424 L) capacity. Each water pull is custom built to suit the customer's needs and to provide the best solution available for the application.

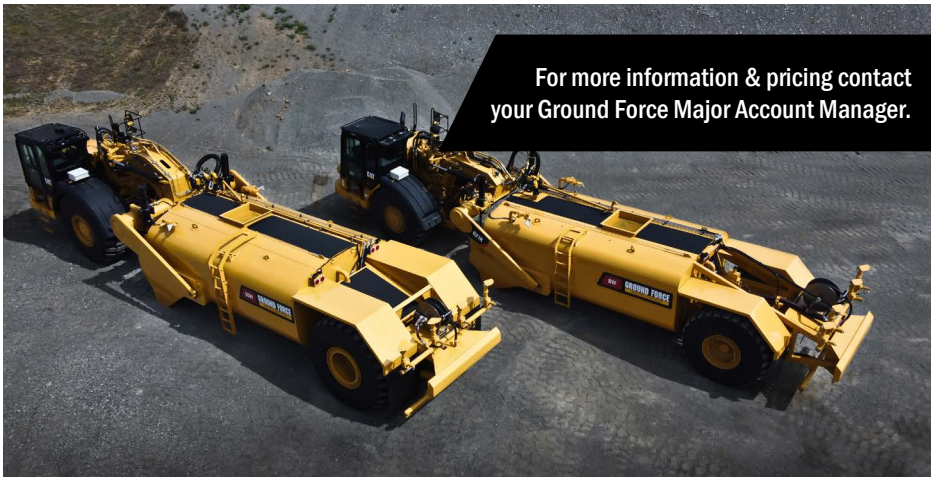


Capacities may vary depending on chassis size, weight distribution, and custom requirements.



WATER PULL TANKS:

CLASS	CAPACITY	MODEL
CAT 613	5,000 G (18,927 L)	5W
CAT 611/615	6,500 G (24,600 L)	6.5W
CAT 621/623	8,000 G (30,283 L)	8W
CAT 631/637	10,000 G (37,854 L)	10W
CAT 651/657	12,000 G (45,424 L)	12W



TANK SPECIFICATIONS

- Utilizes CAT Wheel Tractor-Scrapers (or similar)
- Built for heavy construction and mining application
- Endo-skeleton, designed with structural I-beams for extended life and stability
- Fully baffled: longitudinal and transverse
- Engineered tub-surge control system
- Designed to achieve lowest center of gravity
- Available in both non-drop tank design, or heavy-duty, reverse moldboard with brake saver drop arm design
- Banded manway with safety grate
- Ladder with safety rail
- Anti-skid top walkway with PPE tie-off
- Sump with drain for clean out
- Sealed weatherproof wiring
- LED tail, stop, and turn lights

*Ground Force Field Service Available



GROUND FORCE WATER CONTROL SYSTEM (WCS)

See our online brochure for a complete range of options and specifications.

- Externally mounted, high performance water pump
- Digital in-cab control monitor
- Programmable menu with (4) preset spray settings
 - ✓ Intermittent spray settings for wet-strip dry-strip watering
 - ✓ On-the-fly, one-touch control for change of individual spray heads
 - ✓ Backlit LCD screen for low-light operations
- Integration of an extensive range of options
 - ✓ Rear spray bar with (4) staggered fan-sprays
 - ✓ Side sprays, hose reels, water cannons, & gravity dump
- Heated component enclosure available for arctic applications
- Optional fire foam system



All dimensions, specifications, and product availability are subject to change based on continual product improvement and customer request.



THE GROUND FORCE DIFFERENCE
Innovative & Diverse Products
Loyalty & Devotion to our Customers
Global Service & Support



GROUND FORCE
WORLDWIDE
WORLD'S FINEST MINE SUPPORT EQUIPMENT



6001 E. Seltice Way
Post Falls, ID 83854 U.S.A.
+1.208.664.9291 | Fax 208.664.9475
solutions@gfworldwide.com
gfworldwide.com