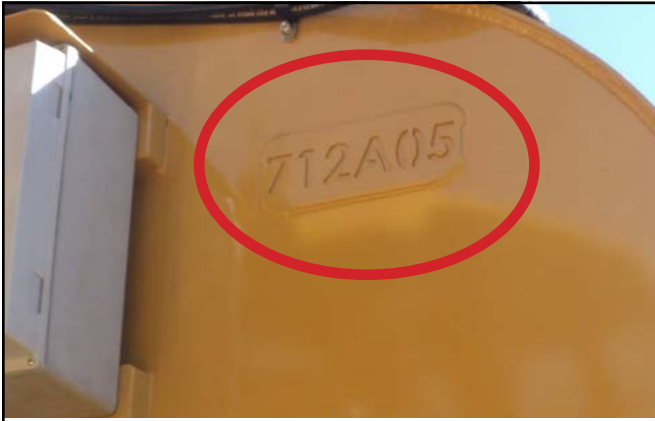


LOCATE MY SERIAL NUMBER



Located on the driver side front of the tank, this SN plate is welded on for longevity. This plate will be found on all Ground Force equipment from 2014 to current.



Located on the driver side or in quick fill or in electrical box. This plate will be found on all Ground Force equipment from 2007 to current.



Located on the driver side of trucks. This plate will be found on all Ground Force and ARESKO equipment from 1985 to current.

GROUND FORCE
WORLDWIDE
WORLD'S FINEST MINE SUPPORT EQUIPMENT

Service & Parts Manual

6K WATER TANK

SN: 712407

© Copyright 2009, by Ground Force Worldwide. All rights reserved. No part of this manual may be reproduced in any form or by any means (including electronic storage and retrieval or into a foreign language) without prior agreement and written consent from Ground Force Worldwide as governed by the United States and International Copyright Laws.

Ground Force Worldwide
 5650 E. Seltice Way
 Post Falls, Idaho 83854
 1 208 664 9291
 info@gfworld.com

Printing History: First Edition - November 2011

GROUND FORCE WORLDWIDE
 PH: 1-208-664-9291 • FAX: 208-664-9475 • www.gfworldwide.com

Ground Force Mfg | Underground Force.

Located on front page of your service and parts manual. Also, located on prints. Please verify you are referencing the correct manual for your equipment.

Titled Weight =

Date	Signature	Checked	

GROUND FORCE MFG., L.L.C. INFORMATIONAL PURPOSES ONLY. THIS INFORMATION IS NOT TO BE USED FOR REPAIR OR MAINTENANCE. ALL INFORMATION IS SUBJECT TO CHANGE WITHOUT NOTICE. © 2011 GROUND FORCE MFG., L.L.C.

