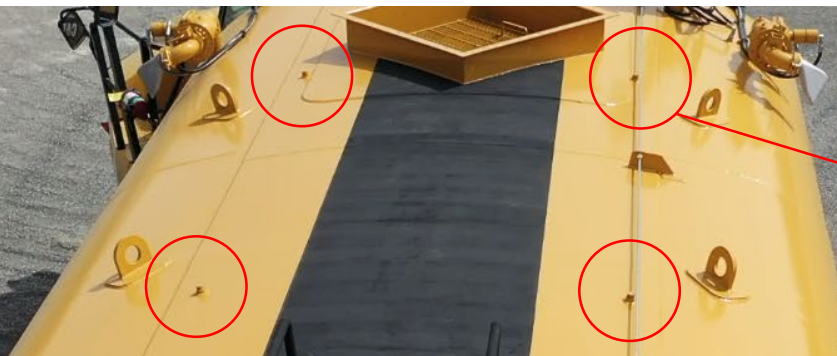


SACRIFICIAL ANODES

WHAT IS A SACRIFICIAL ANODE?

A SACRIFICIAL ANODE ROD is a long metal rod, formed of MAGNESIUM or ALUMINUM around a steel wire core. These rods are located on top of your Ground Force Water Tank and are designed to slowly erode in place of erosion of your water tank. As long as the anode rod is degrading in the tank, the tank will be protected from rusting. This is accomplished through a process called electrolysis, by which the metals in the anode rod attract ions that normally cause rust in steel and iron. These ions are what cause the anode rod to degrade over time.



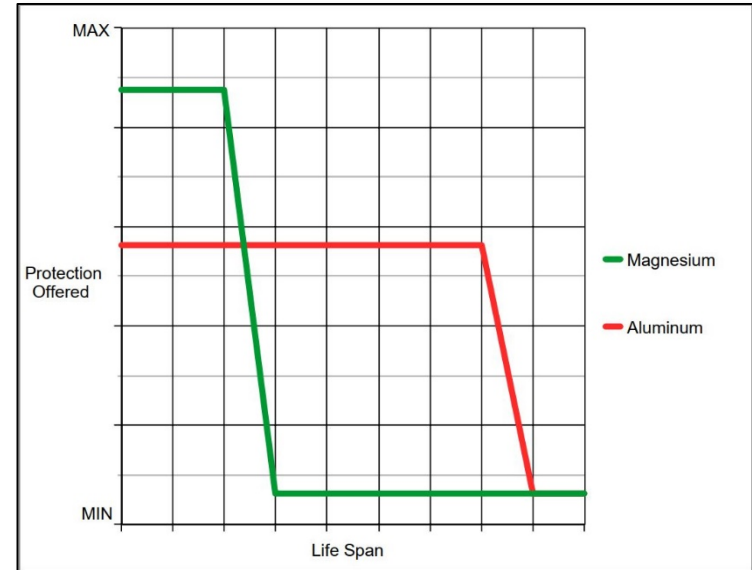
**Sacrificial
Anodes**

SACRIFICIAL ANODES

WHAT ANODE CHOICE IS RIGHT FOR ME?

Ground Force Anodes come in either **MAGNESIUM** or **ALUMINUM**. Magnesium Anodes provide the most overall corrosion protection in fresh water, whereas Aluminum Anodes provide slightly less protection yet have a longer lifespan, and work in a wide variety of water types. This flexibility allows you to provide the best protection for your sites water conditions. Your anodes should be checked monthly and replaced as needed or annually.

For more help on deciding which anode is best for you, contact our Product Support Department.



*Approximation



PARTS & PRODUCT SUPPORT



CHAD WILSON

Parts & Product Support Supervisor

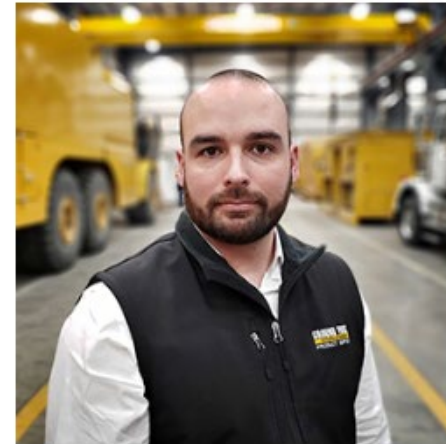
South America
1 (208) 664-9291 Ext. 308
DIRECT: 1 (208) 425-1112



KEVIN MOORE

Parts & Product Support Representative

Western US / Canada
1 (208) 664-9291 Ext. 214
DIRECT: 1 (208) 425-1114



JASON MARTINEZ

Parts & Product Support Representative

Eastern US / Africa / Europe / Asia /
Australia
1 (208) 664-9291 ext. 320
DIRECT: 1 (208) 425-1116

Office Hours: Monday through Friday 7:00 am – 5:00 pm PST • Available for Support 24/7
Phone: +1 (208) 664-9291 • ppsr@gfworldwide.com

For PARTS ORDERS - partsales@gfworldwide.com