

ROCK SPREADER CONTROL SYSTEM (RCS)



- Standard with all Rock Spreader Bodies:**
- Programmable Settings
 - Auto Vibrate Mode
 - Bluetooth Compatible for Easy Support





The demand for safe road conditions is imperative in today's mining and construction industries. Designed to offer ease of operation, Ground Force RCS is the safe and effective solution for road maintenance and traction control.

The **Ground Force RCS** utilizes Electronic Control Systems IQAN® System Products. The display features optical-bonded glass for improved readability and night-time operation, which helps eliminate light refraction. The operator controls the speed and volume the rock is dispersed through the eight button keypad and control knob.

The Ground Force Rock Spreader Control System display module and controller allow the operator to continually adjust the rock delivery based on current road conditions, without having to stop the truck or return to the shop to change operating parameters.

- Rugged, heavy-duty design
- Touchscreen for interactive use
- Sealed components for durability
- Easy-to-operate controls

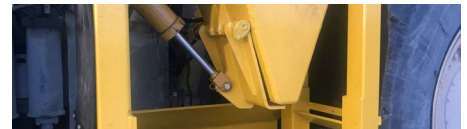


GROUND FORCE RCS SPREADER FEATURES

Spinner Controls: A Spinner (spreader) is installed on each side of the machine. Operation of this function allows for engagement and disengagement by way of the eight-button keypad.



Spinner Speed Controls: Speed can be adjusted on the spinners with the control knob to determine how much distance is desired from the material being spread.



Feed Gate Controls: The flow or volume of material through the feed gates can be controlled with this feature. Each feed gate is controlled independently of the other allowing for custom spreading based on road conditions.

Manual Vibrator Controls: This function allows for manual operation of the vibrators to be chosen individually as needed. Vibrators remain on for 5 seconds and the corresponding icon will be lit on the screen.



GROUND FORCE RCS FEATURES & BENEFITS

AUTO Vibrator Controls: Pressing the AUTO button will engage all the vibrators in sequential order. They will each run for 5 seconds and cycle through four times. To stop the AUTO function press any vibrator control switch.

Micro Controller: Designed of heavy-duty fiberglass construction with an overlapping waterproof cover, this (NEMA certified) enclosure protects the micro-controller and wiring assemblies. The rugged Parker® micro-controller powers the signal to spray components for reliable hydraulic operation. Designed with SAE J1127-rated electrical components with circuit protection and waterproof Deutsch connectors, this system is both reliable and robust.

Reliable Components: Ground Force RCS works in conjunction with your Ground Force water pump and other spray components. With sealed in-cab components and a strategically designed exterior micro box, this system is the most robust on the market.

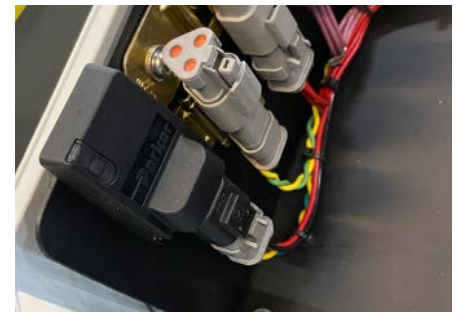
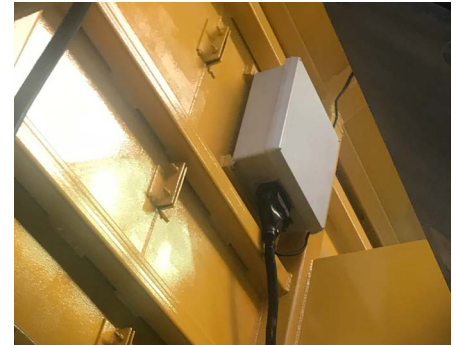
Innovative Troubleshooting: The Ground Force RCS is bluetooth capable, allowing for easy troubleshooting and configuration changes. This technology is app-based and accessible through wifi anywhere in the world.

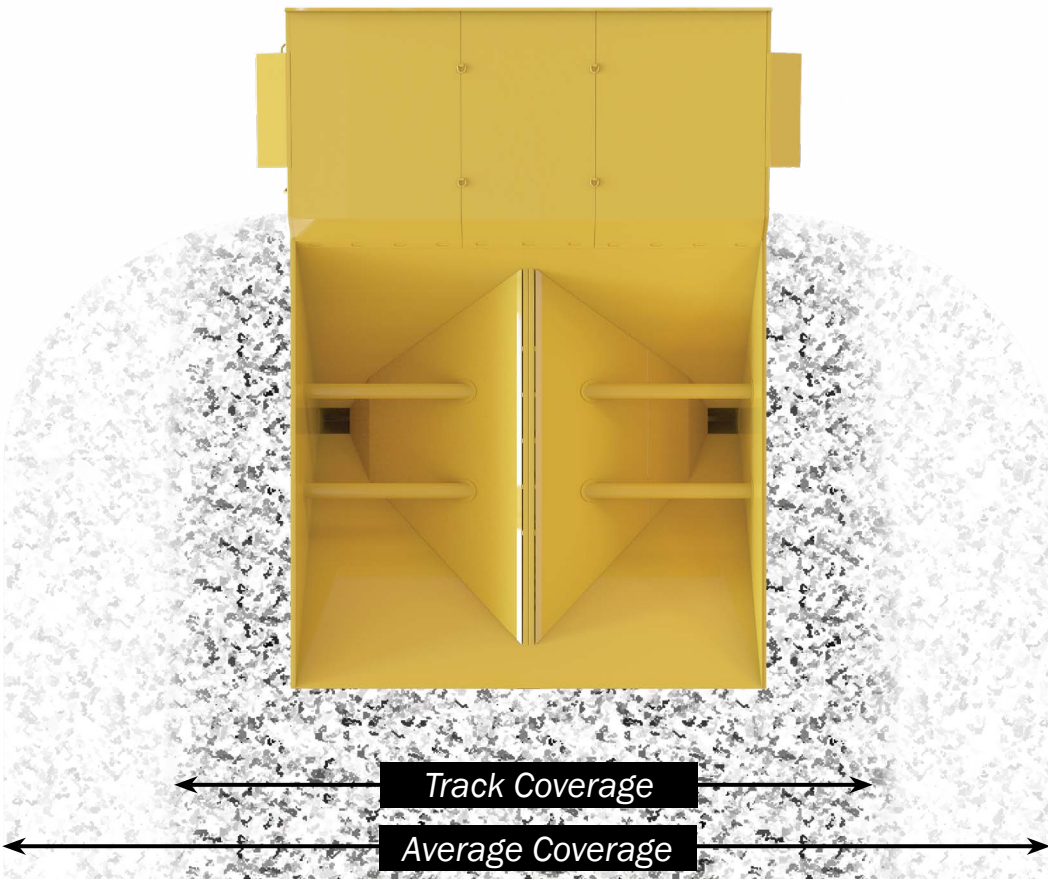
Program Lock/Unlock: This function is for enabling and disabling the system and is controlled from one of the eight button keypads. When disabled the hydraulic pump shuts down.

Work Light Indicator: Strobes are installed on each corner of the Rock Spreader body and will light to indicate the spinners are engaged. They flash for five seconds prior to the spinner motor starting to rotate.

Grizzly Controls: Your Rock Spreader may be equipped with grizzlies. To tilt the grizzlies to remove undesired material, use the eight-button keypad. Each side is designated to a button for both open and close functions.

Interchangeability: This innovative technology allows for easy change-over to your Ground Force Water body, as the system is interchangeable with plug and play functionality.





Ground Force RCS comes STANDARD with all Ground Force Rock Spreader Trucks.

Contact us today for more information on the Rock Spreader Control System or for performance data specific to your needs.



GROUND FORCE

WORLDWIDE

WORLD'S FINEST MINE SUPPORT EQUIPMENT

6001 E. Seltice Way | Post Falls, ID 83854 U.S.A.
+1.208.664.9291 | Fax 208.664.9475
solutions@gfworldwide.com



» FOR MORE INFORMATION

GFWORLDWIDE.COM