

COMPANY PROFILE

GROUND FORCE
WORLDWIDE
WORLD'S FINEST MINE SUPPORT EQUIPMENT



World's Finest Mine Support Equipment:
REDEFINING EXCELLENCE



OUR CORE VALUES: **PEOPLE | INTEGRITY | TEAMWORK | CONTINUOUS IMPROVEMENT**

DISCOVER OUR STORY

GROUND FORCE
WORLDWIDE
WORLD'S FINEST MINE SUPPORT EQUIPMENT



COMPANY STATISTICS

- 30+ Years in the Business
- Equipment in over 70+ Countries
- 85,000 sq ft Manufacturing, Idaho USA
- Global Contract Manufacturing
- Business: 70% International / 30% Domestic
- Manufacturer of World's Largest: Fuel Truck, Water Truck, Cable Reel Truck and Rock Spreader Truck

WHO WE ARE

For over three decades, we have been a trusted solutions provider to the mining industry. We manufacture robust, reliable mining products and offer exceptional world-class service. Our commitment to excellence is demonstrated through our attention to detail while engineering for the most demanding conditions, and manufacturing with the highest quality materials—all while prioritizing your specific needs.

Our equipment is designed to support both surface mining operations and heavy-duty construction projects. We strive to be your comprehensive solution, offering a one-stop shop for all your support equipment needs. Whether you need fuel delivery, water distribution, cable handling, road maintenance, or custom hauling solutions, we have the expertise to deliver. Your complete satisfaction is our ultimate goal.



COMPANY VISION

Ground Force Worldwide's vision is to be the WORLD LEADER in manufacturing the finest open pit and mining equipment. We have earned our success through building relationships with our customers, being passionate about our products, and caring for our employees, environment, and community.



1st Fuel & Lube Truck - 1994



Local Volunteering

DISCOVER OUR STORY

GROUND FORCE
WORLDWIDE
WORLD'S FINEST MINE SUPPORT EQUIPMENT



PRODUCT LINE

Most products available on rigid frame, articulated, and conventional chassis'.

- Fuel and Lube Trucks
- Fuel and Lube Skids
- Water Trucks and Pulls
- Rock Spreader Trucks
- Dump Bodies
- Lowboy Trailers and Goosenecks
- Cable Reel Trucks and Attachments
- Stemming Trucks
- Mechanic Service/Welder Trucks
- Speciality Trucks and Equipment

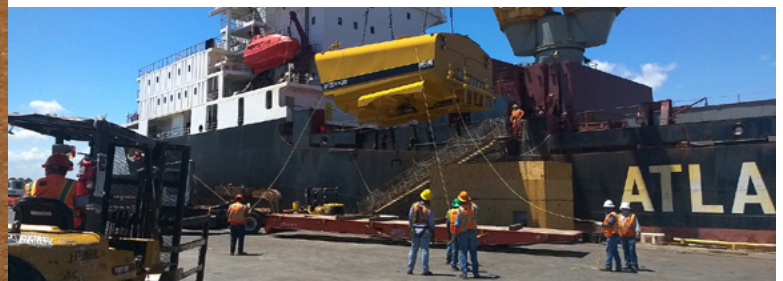


SERVICES

- Global Sales and Marketing
- Engineering
- Full Manufacturing
 - Certified Fabrication
 - State-of-the-art Paint
 - Skilled & Trained Assembly
- Product Support and Parts Distribution
- Field Service and Training
- Global Freight

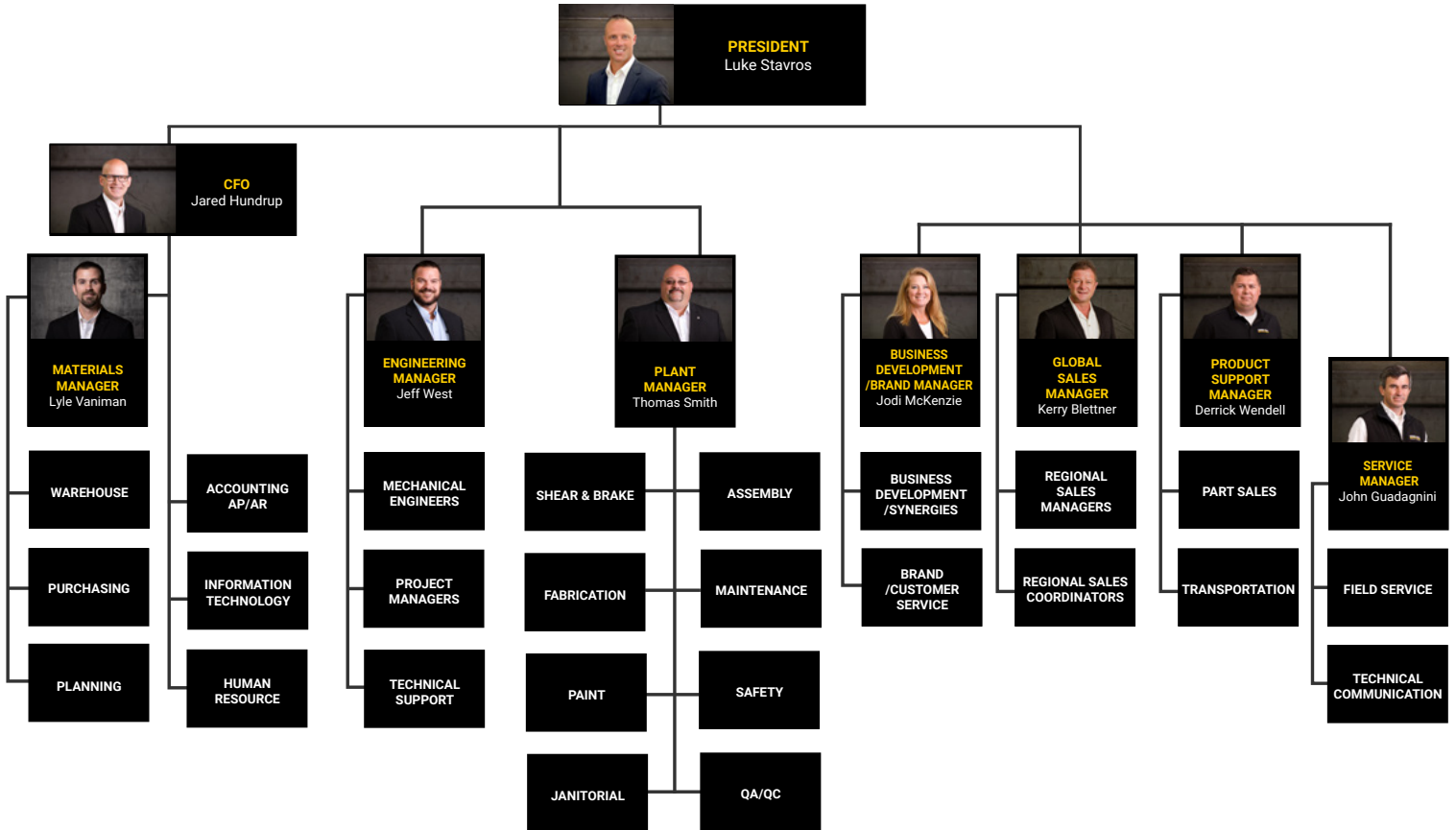
THE DIFFERENCE

Ground Force Worldwide works with customers and dealers in over 75 countries, delivering quality products for surface mining operations. Our innovative and diverse product line sets us apart from our competition. We offer the widest range of support equipment in our industry and strive to provide solutions in a constantly evolving market. We do this by listening to our customers and exhibiting loyalty and devotion through the process. Our global support ensures world-class service for all our products.



MEET THE TEAM

GROUND FORCE
WORLDWIDE
 WORLD'S FINEST MINE SUPPORT EQUIPMENT



DECADES OF DEDICATION

Celebrating over 30 years of Service

Established over three decades ago, Ground Force emerged as a modest, locally-owned enterprise specializing in the manufacture of explosive equipment for the mining industry worldwide. Recognizing the expanding demand for comprehensive fueling solutions at mining sites, we innovated the rigid frame fuel and lube trucks. Our growth trajectory has been marked by robust OEM partnerships and a steadfast dedication to continual enhancement.

Today, Ground Force stands as a premier entity, boasting an expansive portfolio of mining support solutions that encompass fuel and lubrication systems, dust suppression, fire safety, road maintenance, electric cable management, service vehicles, and custom dump bodies. With a presence in over 75 countries, we remain committed to elevating our product offerings, contributing positively to our communities, and fostering a familial work environment that cherishes our employees.

📍 6001 E. Seltice Way Post Falls, Idaho 83854 U.S.A.

✉ Solutions@gfworldwide.com

☎ +1 (208) 664-9291

🌐 gfworldwide.com