

# Dump **BODIES**

40 - 400 tons / 36 - 363 metric ton



OPTIMIZE EFFICIENCY,  
MAXIMIZE PERFORMANCE

**GROUND FORCE**  
WORLDWIDE  
WORLD'S FINEST MINE SUPPORT EQUIPMENT



Ground Force Dump Bodies are engineered and manufactured to increase your mine production and bottom-line profitability. These bodies are strategically designed the “right weight” and configuration for your specific mining application to ensure peak performance.

These bodies utilize an overlap shell design (patent pending), which lessens the amount of external structural support required without compromising strength. The overlap design steps open towards the rear of the body allowing for quicker material discharge and reduced carry-back by elimination of leading edges.

Our engineering team utilizes finite element analysis to ensure strength, durability, and longevity of these bodies. This ensures life expectancy for the most challenging applications and extreme conditions.



# Dump BODIES

40 - 400 tons / 36 - 363 metric ton

## AVAILABLE DUMP BODY MODELS

*Body types available: Coal, Coal Combo, Overburden, Ore and Heated Bodies*

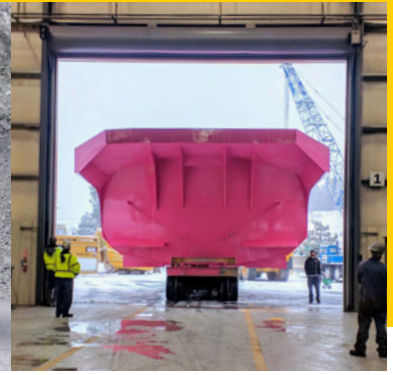
CLASS	MODEL
40 T (36 mt)	40RWB
60 T (55 mt)	60RWB
70 T (63.5 mt)	70RWB
100 T (90 mt)	100RWB
150 T (134 mt)	150RWB
200 T (177 mt)	200RWB
250 T (227 mt)	250RWB
320 T (290 mt)	320RWB
400 T (362 mt)	400RWB

*Capacities shown may vary depending on chassis size, weight distribution, and material density.*

Ground Force Dump Bodies are PURPOSE DESIGNED & BUILT, offering bodies for multiple applications.







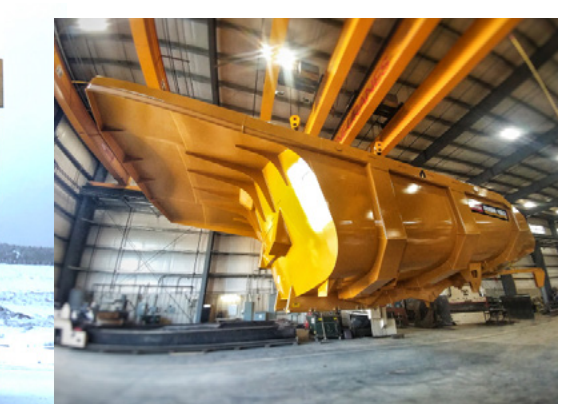
## STANDARD SPECIFICATIONS

- Innovative semi-elliptical dump bed design for maximum strength and quick material release
- Purpose designed & manufactured body for maximum payload
- Designed to minimize visual interference during operation
- Body constructed of 450 – 500 bhn material
- Sub-frame and bolsters constructed of 100 ksi material
- Reinforced and “dished shape” front head for strength and protection
- Engineered with the lowest possible center of gravity
- Reduced load impact on operator
- Sub-frame and bolsters constructed of 100 ksi material
- Heated bodies available for cold weather applications
- Rock ejector brackets


## FEATURES & BENEFITS

- **Increased payload** – Lightweight design allows for more payload
- **Resists carry-back** – Less tire wear / more material hauled
- **Reduces spill rock** – Less cleanup on haul roads and dumps
- **Quick material discharge** – Faster cycle times
- Centered load (due to semi-elliptical design)
- Design is operator friendly with large target area
- Less wear and tear on tires and struts with centered load
- Multiple shipping options that range from single up to 4 pieces, with sub-frame and rear pin bosses pre-mounted and line-bored before delivery
- Multiple liner packages with custom placement
- Full onsite evaluations available

*Field Service & Training Guidance Available*





 6001 E. Seltice Way  
Post Falls, Idaho 83854 U.S.A.

 [Solutions@gfworldwide.com](mailto:Solutions@gfworldwide.com)

 +1 (208) 664-9291

 [gfworldwide.com](http://gfworldwide.com)