

GROUND FORCE

WORLDWIDE

WORLD'S FINEST MINE SUPPORT EQUIPMENT

PRODUCT
CATALOG



WORLD'S FINEST
MINE SUPPORT
EQUIPMENT

GROUND FORCE WARRANTY COVERAGE

1 YEAR OR 5,000 HOURS

At Ground Force, we take pride in the quality of our products and are committed to ensuring your satisfaction. From the time of Product Registration through the life of your equipment our goal is to offer you quality service and technical support to keep you operating safely and efficiently.

Our warranty is designed to safeguard you and provide peace of mind. We strive to make the claims process straightforward and hassle-free. Should you encounter any issues, we urge you to reach out to our Service Manager promptly so we can assist you in resolving them and get you back on track swiftly.



Ground Force Worldwide establishes and builds relationships through listening to our customers, offering innovative solutions, honoring our commitments and exhibiting loyalty to our customers and global dealer network. In doing so, we are able to

expand our brand, continue to offer opportunity to our employees and, bless our community through our success.



Luke Stavros
President

WHO WE ARE

For over three decades, we have been a trusted solutions provider to the mining industry. We manufacture robust, reliable mining products and offer exceptional world-class service. Our commitment to excellence is demonstrated through our attention to detail while engineering for the most demanding conditions, and manufacturing with the highest quality materials—all while prioritizing your specific needs.

Our equipment is designed to support both surface mining operations and heavy-duty construction projects. We strive to be your comprehensive solution, offering a one-stop shop for all your support equipment needs. Whether you need fuel delivery, water distribution, cable handling, road maintenance, or custom hauling solutions, we have the expertise to deliver. Your complete satisfaction is our ultimate goal.

CORE VALUES

CORE VALUES are the foundation of any successful company. They guide our actions, shape our culture, and influence every decision we make. By adhering to our core values, we ensure consistency, build trust with our customers, and foster a positive work environment. These values are not just principles we

PEOPLE

SAFETY | FAMILY | RELATIONSHIPS
SUCCESS | COMMUNITY

INTEGRITY

ACCOUNTABILITY | TRUST | HUMILITY
HONESTY | COMMITMENT

believe in; they are commitments we uphold to deliver exceptional service and maintain the highest standards of integrity and excellence. Sharing our core values with you underscores our dedication to transparency and our unwavering commitment to your satisfaction.

TEAMWORK

COLLABORATION | RESPECT
RELIABILITY | COMMUNICATION | SUPPORT

CONTINUOUS IMPROVEMENT

LISTENING | INNOVATION | TRAINING
QUALITY | PROCESS IMPROVEMENT



TABLE OF CONTENTS

2	FUEL AND LUBE TRUCKS (RIGID FRAME)
6	FUEL AND LUBE TRUCKS (ARTICULATED)
10	FUEL AND LUBE TRUCKS (CONVENTIONAL)
14	FUEL ONLY TRUCKS
18	LUBE ONLY TRUCKS
22	FUEL AND LUBE SKIDS
26	WATER TRUCKS (RIGID FRAME)
30	WATER TRUCKS (ARTICULATED)
34	WATER PULLS
38	ROCK SPREADER TRUCKS
42	DUMP BODIES
46	CABLE REEL TRUCKS AND ATTACHMENTS
50	LOWBOY TRAILERS / MULTI-PURPOSE GOOSENECK
54	STEMMING TRUCKS
56	MECHANIC SERVICE
57	SPECIALTY TRUCKS & EQUIPMENT
58	SERVICE
60	PARTS

Rigid Frame FUEL & LUBE TRUCKS

40 - 240 tons / 36 - 227 metric ton

AVAILABLE RIGID FRAME FUEL AND LUBE MODELS

CLASS	CAPACITY	MODEL
40 T (36 mt)	Diesel: 4,000 gal (15,141 L) Lubricants: 2,250 gal (8,517 L) Grease: 1,100 lb (411 kg)	40FL
60 T (55 mt)	Diesel: 5,500 gal (20,819 L) Lubricants: 2,250 gal (8,517 L) Grease: 1,100 lb (411 kg)	60FL
70 T (63.5 mt)	Diesel: 5,500 gal (20,819 L) Lubricants: 2,250 gal (8,517 L) Grease: 1,100 lb (411 kg)	70FL
100 T (90 mt)	Diesel: 10,000 gal (37,854 L) Lubricants: 4,500 gal (17,034 L) Grease: 3,200 lb (1,194 kg)	100FL
150 T (134 mt)	Diesel: 18,000 gal (68,137 L) Lubricants: 5,500 gal (20,819 L) Grease: 3,500 lb (1,306 kg)	150FL
200 T (177 mt)	Diesel: 22,000 gal (83,279 L) Lubricants: 7,500 gal (28,390 L) Grease: 3,500 lb (1,306 kg)	200FL
250 T (227 mt)	Diesel: 25,000 gal (94,635 L) Lubricants: 9,400 gal (35,582 L) Grease: 3500 lb (1,306 kg)	250FL

**Capacities may vary depending on chassis size, weight distribution, and custom requirements. All Ground Force Worldwide trucks offer a variety of options and upgrades, available on most models. Most rigid frame fuel and lube models are available in open deck or enclosed deck for arctic type applications.*



Rigid Frame Fuel & Lube Trucks

RELIABILITY, DURABILITY, AND A TRUE LEGACY OF EXCELLENCE



Adaptable to any rigid frame chassis, our Fuel and Lube Bodies are engineered for efficiently handling large product volumes in high-production mining applications. Built to last, these trucks ensure reliability in demanding environments.

Diverse configurations and custom features include heated and enclosed options for extreme conditions.

Ground Force Rigid Frame Fuel & Lube Trucks have a proven track record of boosting efficiency and cutting maintenance costs in demanding operations. Choose reliability for your success.

DISCOVER THE BENEFITS

MAXIMIZE FUEL & LUBE PAYLOAD:

Designed to carry large volumes of product while providing excellent stability.

INCREASED EFFICIENCY:

One Rigid Frame Fuel and Lube Truck can replace 2-4 smaller units, resulting in fewer operators and reduced maintenance.

LOCAL DEALER SUPPORT:

Backed by OEM Mining machine support for enhanced reliability and service.



SPECIAL FEATURES

- Fuel delivery 120-300 GPM (454-1,135 LPM)
- Full product filtration
- Fully baffled product tanks
- Product metering systems
- Product tank level sight eyes

OPERATOR EASE & SAFETY

- Ground-level/remote-fill for all products
- New and used filter storage
- Enclosed ground level rear and/or side reel compartments
- Mine-site lighting packages
- Anti-Slip walkways and handrails
- Micro-controller is bluetooth capable for easy troubleshooting and configuration changes by app-based technology where wifi is present.

PRODUCT AVAILABILITY & OPTIONS

- Diesel capacity 4,000-25,000 gal. (15,141-94,635 L)
- New oil and coolant capacity 2,000-8,200 gal. (7,571-31,040 L)
- Grease bins from 800-3,500 lb. (363-1,306 kg)
- Spring, Hydraulic, and Electric reels available
- Enclosed & heated body for arctic applications
- Used oil and coolant tanks
- Air compressor with reservoir tank
- Optional high pressure wash system
- Systems powered by chassis hydraulics or diesel-driven Auxiliary Power Unit (APU)
- Kidney-loop filtration systems
- Roll-over protection system

Field Service & Training Guidance Available



OPTIONAL FLUID LEVEL MONITORING SYSTEM - FLM

- Fluid Level Monitoring for main diesel tank and all fluids
- Digital in-cab control monitor with backlit LCD for low-light operations
- Touch screen functionality and expandable system components for future upgrades



Articulated FUEL & LUBE TRUCKS

25 - 45 tons / 23 - 41 metric ton

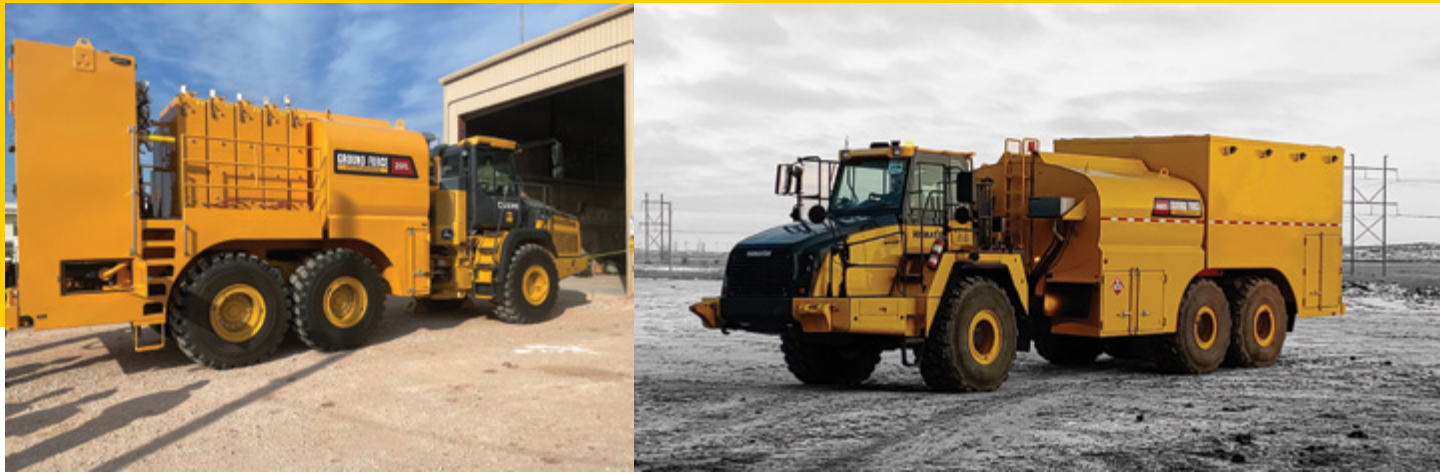


AVAILABLE ARTICULATED FUEL AND LUBE MODELS

Open deck and enclosed models for arctic applications

CLASS	CAPACITY	MODEL
25 T (23 mt)	Diesel: 2,500 gal. (9,463 L) Lubricants: 930 gal. (3,520 L) Grease: 750 lb. (340 kg)	25FL 25EFL
30 T (28 mt)	Diesel: 3,500 gal. (13,248 L) Lubricants: 1,200 gal. (4,542 L) Grease: 750 lb. (340 kg)	30FL 30EFL
35 T (32 mt)	Diesel: 4,000 gal. (15,141 L) Lubricants: 1,500 gal. (5,678 L) Grease: 1,100 lb. (499 kg)	35FL 35EFL
40 T (39 mt)	Diesel: 5,000 gal. (18,927 L) Lubricants: 1,500 gal. (5,678 L)	40FL 40EFL
45 T (41 mt)	Grease: 1,100 lb. (499 kg)	45FL/EFL

**Capacities may vary depending on chassis size, weight distribution, and custom requirements. All Ground Force Worldwide trucks offer a variety of options and upgrades, available on most models. All articulated fuel and lube models are available in open deck or enclosed deck for arctic type applications.*



Articulated Fuel & Lube Trucks **AGILE BY DESIGN, ENGINEERED TO EXCEL**



Ground Force Articulated Fuel and Lube Bodies are custom-engineered with specifications that suit your individual operation and are manufactured to endure extreme conditions and rugged applications.

Our engineering team ensures your Ground Force Fuel and Lube Truck is optimally sized, balanced, and built for longevity. Designed with operator safety and efficiency

in mind, we strategically engineer smart locations for service points and ground-level operator stations for filling and dispensing.

Ground Force Worldwide is the world leader in articulated fuel and lube trucks, with 200+ trucks in mines across the world today.

DISCOVER THE BENEFITS

INCREASED MANEUVERABILITY & VERSATILITY:

Ideal for navigating off-road applications in challenging terrains. The lighter weight prevents sinking in muddy or wet terrain. Adaptable for multiple product configurations.

INCREASED EFFICIENCY:

Designed to carry substantial loads with reduced fuel consumption. Fast ground level servicing streamlines maintenance tasks.

LOCAL DEALER SUPPORT:

Backed by OEM Mining machine support for enhanced reliability and service.



SPECIAL FEATURES

- Fuel delivery 120-300 GPM (454-1,135 LPM)
- Full product filtration
- Fully baffled product tanks
- Product metering systems
- Product tank level sight eyes

OPERATOR EASE & SAFETY

- Ground-level/remote-fill for all products
- New and used filter storage
- Enclosed ground level rear and/or side reel compartments
- Mine-site lighting packages
- Anti-Slip walkways and handrails
- Micro-controller is bluetooth capable for easy troubleshooting and configuration changes by app-based technology where wifi is present.

PRODUCT AVAILABILITY & OPTIONS

- Diesel capacity 4,000-25,000 gal. (15,141-94,635 L)
- New oil and coolant capacity 2,000-8,200 gal. (7,571-31,040 L)
- Grease bins from 800-3,500 lb. (363-1,306 kg)
- Spring, hydraulic, and electric reel options
- Enclosed & heated body for arctic applications
- Used oil and coolant tanks
- Air compressor with reservoir tank
- Systems powered by chassis hydraulics or diesel-driven Auxiliary Power Unit (APU)
- Kidney-loop filtration systems
- Roll-over protection system
- Optional heated product tanks
- Optional high pressure wash system
- Optional Ground Force chassis frame stretch

Field Service & Training Guidance Available



OPTIONAL FLUID LEVEL MONITORING SYSTEM - FLM

- Fluid Level Monitoring for main diesel tank and all fluids
- Digital in-cab control monitor with backlit LCD for low-light operations
- Touch screen functionality and expandable system components for future upgrades





Conventional **FUEL & LUBE TRUCKS**

Class 8 Tandem Axle

AVAILABLE CONVENTIONAL FUEL AND LUBE MODELS

CLASS	CAPACITY	MODEL
Class 8	Diesel: 1,000 – 2,500 gal. (3,785 – 9,463 L) Lubricants: 1,400 – 2,500 gal. (5,299 – 9,463 L) Grease: 750 lb. (340 kg)	FL
Class 8	Diesel: 1,000 – 2,000 gal. (3,785 – 7,570 L) EFL Lubricants: 1,400 – 2,500 gal. (5,299 – 9,463 L) Grease: 750 lb. (340 kg)	EFL

**Capacities may vary depending on chassis size, weight distribution, and custom requirements. All Ground Force Worldwide trucks offer a variety of options and upgrades, available on most models. All conventional fuel and lube models are available in open deck or enclosed deck for arctic type applications.*



Conventional Fuel & Lube Trucks **COMPACT, YET POWERFUL**



Ground Force Conventional Fuel & Lube bodies are reliable and durable for your everyday heavy construction and mining service needs. Small on footprint but large on availability makes these over-the-road trucks a clear choice when size matters.

Engineered with efficient configurations and reliable components, offering both open deck layouts and heated and enclosed units for extreme conditions.

DISCOVER THE BENEFITS

COMPACT AND WORK READY:

Over the road design allows for maximum versatility while offering the product diversity you need.

COST SAVINGS:

Conventional sized fuel and lube trucks offer a more economical solution while still allowing maintenance support for remote locations with challenging terrain.

LOCAL DEALER SUPPORT:

Backed by OEM Mining machine support for enhanced reliability and service.



SPECIAL FEATURES

- Fuel delivery 120 GPM (454 LPM)
- Full product filtration
- Fully baffled product tanks
- Product metering systems
- Product tank level sight eyes

OPERATOR EASE & SAFETY

- Ground-level/remote-fill for all products
- New and used filter storage
- Enclosed ground level rear and/or side reel compartments
- Mine-site lighting packages
- Anti-Slip walkways and handrails
- Micro-controller is bluetooth capable for easy troubleshooting and configuration changes by app-based technology where wifi is present.

PRODUCT AVAILABILITY & OPTIONS

- Diesel capacity 1,000-4,000 gal. (3,785-15,141 L)
- New oil and coolant capacity 400-1,500 gal. (1,514-5,678 L)
- Grease bins from 750-3,500 lb. (340-1,306 kg)
- Heated product tanks available
- Spring, Hydraulic, and Electric reel available
- Enclosed & heated body for arctic applications
- Used oil and coolant tanks
- Air compressor with reservoir tank
- Optional high pressure wash system
- Systems powered by chassis hydraulics or diesel-driven Auxiliary Power Unit (APU)
- Kidney-loop filtration systems
- Roll-over protection system

Field Service & Training Guidance Available



OPTIONAL - FLUID LEVEL MONITORING SYSTEM (FLM)

- Fluid Level Monitoring for main diesel tank and all fluids
- Digital in-cab control monitor with backlit LCD for low-light operations
- Touch screen functionality and expandable system components for future upgrades



Fuel Only TRUCKS

25 - 250 tons / 23 - 227 metric ton



AVAILABLE FUEL ONLY TRUCK MODELS

CLASS	CAPACITY	MODEL
Heavy-Duty Tandem-Axle	Diesel: 2,000 – 5,000 gal. (7,570 – 18,927 L)	FT
25 T (23 mt)	Diesel: 5,000 gal. (18,927 L)	25F
30 T (28 mt)	Diesel: 6,000 gal. (22,712 L)	30F
35 T (32 mt)	Diesel: 7,000 – 8,000 gal. (26,497 – 30,283 L)	35F
40 T (36 mt)	Diesel: 9,000 – 10,000 gal. (34,068 L – 37,854 L)	40FL
60 T (55 mt)	Diesel: 13,000 gal. (49,210 L)	60FL
70 T (64 mt)	Diesel: 15,000 gal. (56,781 L)	70FL
100 T (90 mt)	Diesel: 18,000 – 20,000 gal. (68,137 – 75,708 L)	100FL
150 T (136 mt)	Diesel: 25,000 – 32,000 gal. (94,635 – 121,133 L)	150FL
200 T (181 mt)	Diesel: 35,000 – 40,000 gal. (132,489 – 151,416 L)	200FL
250 T (227 mt)	Diesel: 45,000 – 52,000 gal. (170,343 – 196,841 L)	250FL

**Capacities may vary depending on chassis size, weight distribution, and custom requirements. All Ground Force Worldwide trucks offer a variety of options and upgrades, available on most models.*



Fuel Only Trucks WHEN THE DEMAND IS FUEL-DRIVEN



Ground Force Fuel Only Bodies can carry massive volumes of fuel, making them ideal for servicing larger fleets in your most challenging terrain. These dedicated trucks offer fueling efficiency and reduced downtime by minimizing refueling time and getting your production equipment back to work.

Engineered with a low center of gravity to increase stability, these trucks offer safer navigation on a variety of road conditions. With better operator handling, accidents or spillage of hazardous materials are minimized.



SPECIAL FEATURES

- Fuel delivery 20-300 GPM (75-1,135 LPM)
- Full product filtration
- Fully baffled product tanks
- Product metering systems
- Product tank level sight eyes

OPERATOR EASE & SAFETY

- Ground-level/remote-fill for all products
- New and used filter storage
- Enclosed ground level rear and/or side reel compartments
- Mine-site lighting packages
- Anti-Slip walkways and handrails
- Micro-controller is bluetooth capable for easy troubleshooting and configuration changes by app-based technology where wifi is present.

PRODUCT AVAILABILITY & OPTIONS

- Diesel capacity 2,000-52,000 gal. (7,570-196,841 L)
- Spring, Hydraulic, and Electric reel available
- Enclosed & heated body for arctic applications
- Systems powered by chassis hydraulics or diesel-driven Auxiliary Power Unit (APU)
- Kidney-loop filtration systems
- Roll-over protection system

Field Service & Training Guidance Available



DISCOVER THE BENEFITS

MAXIMUM DELIVERY:

Fuel only trucks allow for maximum capacity in challenging terrain when high volume is required.

EFFICIENCY:

Dedicated fuel trucks offer quicker serviceability in larger mine sites for fast-paced fueling programs.

LOCAL DEALER SUPPORT:

Backed by OEM Mining machine support for enhanced reliability and service.

OPTIONAL FLUID LEVEL MONITORING SYSTEM - FLM

- Fluid Level Monitoring for main diesel tank and all fluids
- Digital in-cab control monitor with backlit LCD for low-light operations
- Touch screen functionality and expandable system components for future upgrades





AVAILABLE LUBE ONLY TRUCK MODELS

Open deck and enclosed models for arctic applications

CLASS	CAPACITY	MODEL
Heavy-Duty Tandem-Axle	Lubricants: 200 – 300 gal. (757 – 1,135 L) Grease: 100 +/- lb. (45 +/- kg)	LT
25 T (23 mt)	Lubricants: 3,000 +/- gal. (11,356 +/- L) Grease: 800 – 1100 lb. (362 – 498 kg)	25L
30 T (28 mt)	Lubricants: 3,000 +/- gal. (11,356 +/- L) Grease: 800 – 1100 lb. (362 – 498 kg))	30L
35 T (32 mt)	Lubricants: 3,500 +/- gal. (13,248 +/- L) Grease: 1100+ lb. (498 kg)	35L
40 T (36 mt)	Lubricants: 4,000 – 6,000 gal. (37,854 L) Grease: 1,100+ lb. (498 kg)	40L
60 T (55 mt)	Lubricants: 5,000 – 7,000 gal. (18,927 – 26,497 L) Grease: 2,200 lb.(997kg)	60L

**Capacities may vary depending on chassis size, weight distribution, and custom requirements. All Ground Force Worldwide trucks offer a variety of options and upgrades, available on most models. Most lube models are available in open deck or enclosed deck for arctic type applications.*

Lube Only TRUCKS

15 - 60 tons / 14 - 55 metric ton



Lube Only Trucks

REDUCE YOUR RISK WITH PROPER LUBRICATION



Ground Force Lube Only Bodies offer maximum capacities of lubrication when your operation is large and you need efficient delivery of fluids. These bodies are engineered to fit rigid frame, articulated, and conventional chassis to offer the most diverse fleet lineup.

Engineered with Ground Force innovative product tank designs and quality componentry, coupled with open deck and enclosed options, these Lube Only Bodies offer reliability and longevity and are suitable for the most extreme weather conditions.

DISCOVER THE BENEFITS

MAXIMUM DELIVERY:

Lube only trucks allow for maximum capacity in challenging terrain when high volume is required.

EFFICIENCY:

Dedicated lube trucks offer quicker serviceability in larger mine sites for fast-paced lubrication programs.

LOCAL DEALER SUPPORT:

Backed by OEM Mining machine support for enhanced reliability and service.



SPECIAL FEATURES

- Products include oil, used oil, coolant, used coolant, grease, air & water
- Full product filtration
- Fully baffled product tanks
- Product metering systems
- Product tank level sight eyes

PRODUCT AVAILABILITY & OPTIONS

- Diesel capacity 200-7,000 gal. (757-26,497 L)
- Spring, Hydraulic, and Electric reel available
- Enclosed & heated body for arctic applications
- Systems powered by chassis hydraulics or diesel-driven Auxiliary Power Unit (APU)
- Kidney-loop filtration systems
- Roll-over protection system

OPERATOR EASE & SAFETY

- Ground-level/remote lube fill
- New and used filter storage
- Enclosed ground level rear and/or side reel compartments
- Mine-site lighting packages
- Anti-Slip walkways and handrails
- Bluetooth capable micro-controller for easy troubleshooting and configuration changes by app based technology where wifi is present

Field Service & Training Guidance Available



OPTIONAL FLUID LEVEL MONITORING SYSTEM - FLM

- Fluid Level Monitoring for all lubricants
- Digital in-cab control monitor with backlit LCD for low-light operations
- Touch screen functionality and expandable system components for future upgrades





Fuel & Lube **SKIDS**

5,000 - 100,000 gallons / 18,927 - 378,541 liters

AVAILABLE FUEL AND LUBE SKID MODELS

CLASS	CAPACITY
Fuel Only	Fuel: 5,000 – 100,000 gal. (18,927 – 378,541 L)
Lube Only	Lubricant: 11,400 – 40,000 gal. (43,153 – 151,416 L) Grease: 1,100 – 3,500 lb. (498 – 1,587 kg)
Fuel & Lube	Fuel: 10,000 – 100,000 gal. (37,854 – 378,541 L) Lubricant: 2,000 – 10,000 gal. (7,570 – 37,854 L) Grease: 1,100 – 3,500 lb. (498 – 1,587 kg)
Diesel Exhaust Fluid (DEF)	Diesel Exhaust Fluid: 5,000 – 10,000 gal. (18,927 – 37,854 L)

**Capacities may vary depending on configuration, and custom requirements. All Ground Force Worldwide skids offer a variety of options and upgrades.*



Fuel & Lube Skids

PEAK EFFICIENCY, OPTIMUM YIELD



Ground Force Fuel and Lube Skids deliver superior performance while offering a variety of options. These units offer cost savings while still allowing you a mobile solution. Easily towed by a track-type tractor makes transport efficient as your operation grows.

Engineered to offer diverse arrangements, including office spaces, workspace and restrooms, Ground Force Fuel and Lube Skids provide the best return on investment in a mobile asset.



SPECIAL FEATURES

- Fuel delivery 120 - 300 GPM (454-1,135 LPM)
- Full product filtration
- Fully baffled product tanks
- Product metering systems
- Product tank level sight eyes

OPERATOR EASE & SAFETY

- Built on skids for easy transport by lowboy or towing with track-type tractor
- Ground-level/remote-fill for all products
- New and used filter storage
- Enclosed ground level, rear and/or side reel compartments
- Mine-site lighting packages
- Anti-Slip walkways and handrails

LUBE/EQUIPMENT "DOG-HOUSE"

- Includes machinery and product tank enclosure
- Mounted directly to heavy-duty skid frames
- Single or Multiple Reel Rack Assembly
- Built-in spill containment
- Office/break room with HVAC

PRODUCT AVAILABILITY & OPTIONS

- Diesel capacity 5,000-100,000 gal. (18,927-378,541 L)
- New oil and coolant capacity 2,000-10,000 gal. (7,570-37,854 L)
- Grease bins from 1,100-3,500 lb. (498-1,587 kg)
- Heated product tanks available
- Spring, Hydraulic, and Electric reel available
- Used oil and coolant tanks
- Air compressor with reservoir tank
- Systems powered by chassis hydraulics or diesel-driven Auxiliary Power Unit (APU)
- Kidney-loop filtration systems
- Single or multiple reel rack assembly
- Optional office space, workspace, and restrooms
- Optional high pressure wash system
- Optional insulated and heated and/or AC configurations

FUEL TANK SYSTEMS

- Double wall certified tanks
- Mounted directly to heavy-duty skid frames
- Vents on primary and secondary tanks
- Sight eyes
- Leak detection system
- High-efficiency filtration system
- Top-of-tank catwalk assembly

Field Service & Training Guidance Available

DISCOVER THE BENEFITS

COST SAVINGS:

Skid units offer savings over traditional mobile solutions while still offering portability by track-type tractor for efficiency as your operation grows.

DIVERSE CONFIGURATIONS:

Customizations offered by skid units allow for multiple product layouts, office spaces, restrooms, additional workspaces, and other specialty needs, all while delivering large volumes of product.

LOCAL DEALER SUPPORT:

Backed by OEM Mining machine support for enhanced reliability and service.



OPTIONAL - FLUID LEVEL MONITORING SYSTEM (FLM)



- Fluid Level Monitoring for main diesel tank and all fluids
- Digital in-cab control monitor with backlit LCD for low-light operations
- Touch screen functionality and expandable system components for future upgrades



Rigid Frame WATER TRUCKS

40 - 400 tons / 36 - 363 metric ton

AVAILABLE RIGID FRAME WATER TRUCK MODELS

CLASS	CAPACITY	MODEL
40 T (36 mt)	9,000 G (34,068 L)	9W
50 T (45 mt)	10,000 G (37,854 L)	10W
60T (54 mt)	12,000 - 13,000 G (45,424 - 49,210)	12W / 13W
70 T (63 mt)	15,000 G (56,781 L)	15W
100 T (90 mt)	18,000 - 20,000 G (68,137 - 75,708 L)	18W / 20W
150 T (136 mt)	25,000 - 32,000 G (94,635 - 121,133 L)	25W / 32W
200 T (181 mt)	35,000 - 40,000 G (132,489 - 151,416 L)	35W / 40W
240 T (217 mt)	45,000 - 52,000 G (170,343 - 196,841 L)	45W / 52W
400 T (363 mt)	60,000 - 62,000 G (227,124 - 234,695 L)	60W / 62W

**Explore a range of special features, many of which are included as standard with our equipment. Capacities vary based on chassis size and weight distribution.*



Rigid Frame Water Trucks

WHEN SIZE MATTERS, OUR SUPER TANKERS DELIVER



Ground Force Rigid Frame Water Trucks are engineered to ensure your water truck delivers the exact amount of water you need – efficiently, and safely. Tackling all your dust suppression, fire-fighting, and general water truck needs, these bodies are designed to carry massive volumes of water to manage the largest of operations.

Engineered with an internal endoskeleton and dual-radius semi-elliptical shape, our tank design allows for

an optimal center of gravity while providing the strength needed for your water tank to last in tough conditions. Fully baffled tanks break up water flow for increased safety and operator stability.

The Ground Force Water Control System (WCS) comes standard with all water solutions offering clear and simple in-cab digital controls, strategic placement of critical components, and wireless remote operation if desired along with numerous other features.

DISCOVER THE BENEFITS

MAXIMIZED CAPACITY:

A robust design engineered to carry large volumes of water; these bodies offer maximum capacities with long-term durability.

SAFE AND DURABLE:

Engineered with strategic internal baffling, dual-radius semi-elliptical shape, and optimal center of gravity, these bodies provide the strength you need while putting safety first.

LOCAL DEALER SUPPORT:

Backed by OEM Mining machine support for enhanced reliability and service.



TANK SPECIFICATIONS

- Water Capacity: 9,000 - 62,000 gal (34,068 - 234,695 L)
- Built for heavy-duty mining applications
- Dual-radius elliptical design
- Endo-skeleton, designed with structural I-beams for extended life and stability
- Full baffled; longitudinal and transverse
- Custom engineered tub-surge control system
- Sump with drain for cleanout
- Sealed weatherproof wiring
- LED tail, stop and turn lights
- Optional heated component enclosure for arctic applications
- Optional fire foam system

OPERATOR EASE AND SAFETY

- Ground Force Water Control System (WCS)
- Designed to achieve lowest center of gravity
- Banded manway with safety grate
- Ladder with safety handrails
- Anti-skid top walkway with PPE tie-off

Field Service & Training Guidance Available



WATER CONTROL SYSTEM - WCS

- Externally mounted, high performance water pump
- Digital in-cab control display
- Programmable menu with (6) preset spray settings
 - Intermittent spray settings for wet-strip, dry-strip watering
 - On-the-fly, one-touch control for quick on/off functionality
 - Backlit LCD screen for low-light operations
- Integration of an extensive range of options
 - Rear spray bar with (4) staggered fan-sprays
 - Side sprays, hose reels, water cannons, & gravity dump



INTERCHANGEABILITY: These bodies are designed for interchangeability with the Ground Force Rock Spreader bodies. With plug-and-play connections, switching from water season to road maintenance has never been easier.

Articulated **WATER TRUCKS**

25 - 45 tons / 23 - 41 metric ton



AVAILABLE ARTICULATED WATER TRUCK MODELS

CLASS	CAPACITY	MODEL
25 T (23.6 mt)	5,000 G (18,927 L)	5W
30 T (28.1 mt)	6,000 G (37,854 L)	6W
36 T (32.7 mt)	7,000 G (26,497 L)	7W
40 - 43 T (39.5 mt)	8,000 G (30,283 L)	8W
45 T (41 mt)	9,000 - 9,500 G (34,068 - 35,961 L)	9W / 9.5W

**Explore a range of special features, many of which are included as standard with our equipment. Capacities vary based on chassis size and weight distribution.*



Articulated Water Trucks

LEADING THE INDUSTRY WITH PREMIUM STANDARDS



Ground Force Articulated Water Trucks are designed to be work-ready and easy to operate. Whether you need one, or are outfitting a whole rental fleet, they will tackle all your dust suppression, fire-fighting, and general water truck needs.

Engineered with dual-radius semi-elliptical shape, our tank design allows for an optimal center of gravity while

providing the strength needed for your water tank to last in tough conditions. Fully baffled tanks break up water flow for increased safety and operator stability.

The Ground Force Water Control System (WCS) comes standard with all water solutions offering clear and simple in-cab digital controls, strategic placement of critical components, and wireless remote operation if desired along with numerous other features.

DISCOVER THE BENEFITS

RELIABLE AND PROVEN:

Engineered with premium features and a robust design these workhorse water tanks have high availability and are designed easy to operate with low maintenance.

AGILE AND DEPENDABLE:

Designed to access challenging and changing terrain, these water bodies are ideal where space is limited but reliable dust suppression, fire fighting, and general water needs are required.

LOCAL DEALER SUPPORT:

Backed by OEM Mining machine support for enhanced reliability and service.



TANK SPECIFICATIONS

- Water Capacity: 5,000 - 9,500 gal (18,927 - 35,961 L)
- Built for heavy-duty mining applications
- Dual-radius elliptical design
- Full baffled; longitudinal and transverse
- Custom engineered tub-surge control system
- Sump with drain for cleanout
- Sealed weatherproof wiring
- LED tail, stop and turn lights
- Optional fire foam system

OPERATOR EASE AND SAFETY

- Ground Force Water Control System (WCS)
- Designed to achieve lowest center of gravity
- Banded manway with safety grate
- Ladder with safety handrails
- Anti-skid top walkway with PPE tie-off

Field Service & Training Guidance Available



WATER CONTROL SYSTEM - WCS

- Externally mounted, high performance water pump
- Digital in-cab control display
- Programmable menu with (6) preset spray settings
 - Intermittent spray settings for wet-strip, dry-strip watering
 - On-the-fly, one-touch control for quick on/off functionality
 - Backlit LCD screen for low-light operations
- Integration of an extensive range of options
 - Rear spray bar with (4) staggered fan-sprays
 - Side sprays, hose reels, water cannons, & gravity dump
- Heated component enclosure available for arctic applications
- Optional fire foam system





Designed for CAT Wheel Tractor Scraper
WATER PULL

5,000 - 12,000 gallons / 18,927 - 45,424 liters

AVAILABLE WATER PULL MODELS

CLASS	CAPACITY	MODEL
CAT 613	5,000 G (18,927 L)	5W
CAT 611/615	6,000 G (24,600 L)	6.5W
CAT 621/623	8,000 G (30,283 L)	8W
CAT 631/637	10,000 G (37,854 L)	10W
CAT 651/657	12,000 G (45,424 L)	12W

**Explore a range of special features, many of which are included as standard with our equipment. Capacities vary based on chassis size and weight distribution.*



Water Pull **WORK READY AND BUILT TO LAST**



Ground Force Water Pulls are designed to be work-ready and user-friendly. Built for heavy construction and mining applications they will tackle all your dust suppression, fire-fighting, and general water truck needs.

Engineered to utilize CAT Wheel Tractor Scrapers (or similar), these low-profile tanks are designed with the same quality and innovation as all Ground Force water

tanks but offer large volumes of water in a specialty application.

The Ground Force Water Control System (WCS) comes standard with all water solutions offering clear and simple in-cab digital controls, strategic placement of critical components, and wireless remote operation if desired along with numerous other features.

DISCOVER THE BENEFITS

SPECIALIZED SOLUTION:

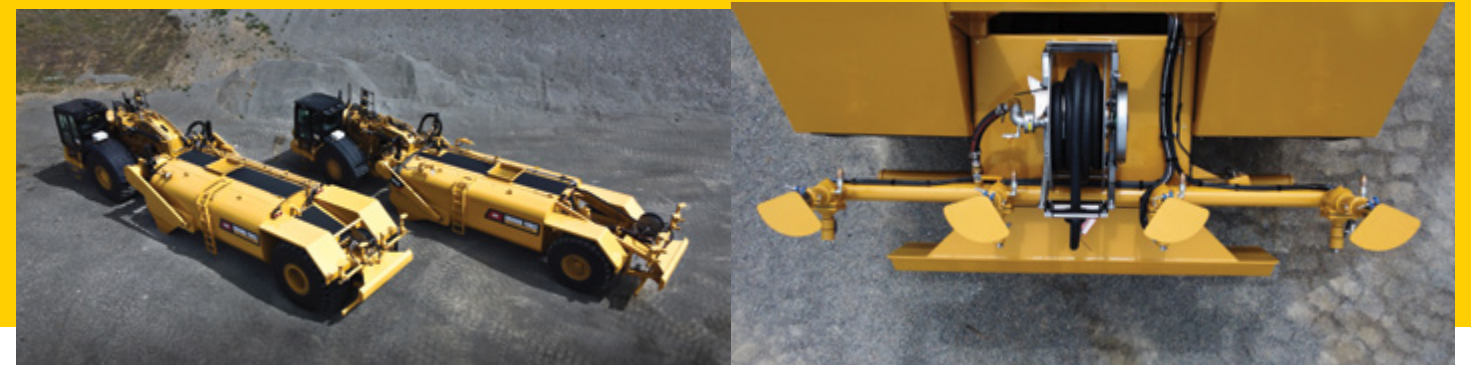
Designed to utilize CAT wheel tractor scrapers (or similar) these low-profile tanks offer large volumes and standard features.

RELIABLE AND DURABLE:

A robust design engineered with tank baffling and structural internal support for tank longevity and optimal return on investment.

LOCAL DEALER SUPPORT:

Backed by OEM Mining machine support for enhanced reliability and service.



TANK SPECIFICATIONS

- Water Capacity: 5,000 - 12,000 gal (18,927 – 45,424 L)
- Built for heavy-duty mining applications
- Utilizes CAT Wheel Tractor Scraper or similar
- Dual-radius elliptical design
- Endo-skeleton, designed with structural I-beams for extended life and stability
- Available in non-drop tank design or heavy-duty reverse moldboard with brake saver drop arm design
- Full baffled; longitudinal and transverse
- Custom engineered tub-surge control system
- Sump with drain for cleanout
- Sealed weatherproof wiring
- LED tail, stop and turn lights

OPERATOR EASE AND SAFETY

- Ground Force Water Control System (WCS)
- Designed to achieve lowest center of gravity
- Manway with safety grate
- Ladder with safety handrails
- Anti-skid top walkway with PPE tie-off

Field Service & Training Guidance Available



WATER CONTROL SYSTEM - WCS

- Externally mounted, high performance water pump
- Digital in-cab control display
- Programmable menu with (6) preset spray settings
 - Intermittent spray settings for wet-strip, dry-strip watering
 - On-the-fly, one-touch control for quick on/off functionality
 - Backlit LCD screen for low-light operations
- Integration of an extensive range of options
 - Rear spray bar with (4) staggered fan-sprays
 - Side sprays, hose reels, water cannons, & gravity dump
- Heated component enclosure available for arctic applications
- Optional fire foam system





Rock Spreader **TRUCKS**

60 - 240 tons / 55 - 227 metric ton

AVAILABLE ROCK SPREADER TRUCK MODELS

CLASS	ROCK SPREADER PAYLOAD	BED VOLUME (yd ³)	MODEL
60 T (55 mt)	40 tons	30 (23 cu m)	60RS
70 T (63 mt)	40 tons	30 (23 cu m)	70RS
100 T (90.7 mt)	67 tons	50 (38 cu m)	100RS
150 T (136 mt)	133 tons	100 (76 cu m)	150RS
200 T (181.4 mt)	166 tons	125 (95 cu m)	200RS
240 T (217.7 mt)	200 tons	150 (114 cu m)	240RS

**Capacities may vary depending on custom requirements and material density.*



Rock Spreader Trucks **LEVEL UP YOUR ROAD MAINTENANCE PROGRAM**



Ground Force Rock Spreader Bodies are custom-engineered to meet the demands of your haul road maintenance program while offering lower operating costs and increased efficiency. These bodies replace multiple pieces of equipment and reduce the number of operators while offering peak performance on the widest and most challenging haul roads.

Our engineering department evaluates your application to ensure your Ground Force Rock Spreader Truck is equipped with robust components strategically engineered to allow for safe and effective material delivery. We examine your material and share recommendations to optimize the performance of your road maintenance program on steep grades or other challenging road conditions.

DISCOVER THE BENEFITS

COST SAVINGS:

Reducing costs for maintenance and labor over traditional methods by eliminating the need for multiple operators and additional equipment.

INCREASED EFFICIENCY:

Complete coverage in a single pass, lowering labor costs, reducing tire wear and saving on fuel costs.

LOCAL DEALER SUPPORT:

Backed by OEM Mining machine support for enhanced reliability and service.



SPECIAL FEATURES

- Innovative slope design for smooth material flow
- Heavy-duty, extreme service vibrators for ensure efficient material flow
- Hydraulically-operated feed gates with sensors for adjustable feed rate
- Bolt on feed hopper design for service access
- Driver & curb side material discharge dispensers feature
 - Variable speed rotary casting wheels (0-150 rpm)
 - Spreads up to 60 feet (18 meters)
 - Includes directional casting guards to protect chassis underbody
- Multiple configurations for hydraulically operated grizzly screens
- Hydraulic functions utilize the host chassis existing hoist circuit
- Bed installation utilizes host chassis rear pin bosses
- Rear bed pin bosses fully welded & line-bored
- Sub-frames include shim-style/replaceable body pads

OPERATOR EASE AND SAFETY

- Ground Force Rock Spreader Control System (RCS)
- Inclinator installed to indicate chute gate position
- Easy to operate in-cab display with (6) programable presets
- Supplied rear pins with grease zerks
- Steel cab canopy and top-mounted side spill guards
- Removable body for easy change-over to GFW Water Tank kit
- Stand for seasonal storage
- (4) LED Floodlights to illuminate discharge points
- Four (4) amber strobe warning lights
- Back up alarm

Field Service & Training Guidance Available

ROCK SPREADER CONTROL SYSTEM (RCS)

- Digital in-cab control monitor
- Programmable dispensing pattern settings
 - On-the-fly, operator-controlled continuous adjustability to meet the current road conditions
 - Backlit LCD screen for low-light operations
- Optional grizzly gates
- Built-in bin vibrators for better feed
- 2 material discharge dispensers (1 per side)
 - Hydraulically operated feed gate
 - Variable-speed rotary spinners
 - Built-in safety beacons alerting surrounding personnel when they are activated



INTERCHANGEABILITY: These bodies are designed for interchangeability with the Ground Force Water bodies. With plug-and-play connections, switching from road maintenance to water season has never been easier.

Dump **BODIES**

40 - 400 tons / 36 - 363 metric ton



AVAILABLE DUMP BODY MODELS

CLASS

*Ground Force Dump Bodies are PURPOSE DESIGNED & BUILT, offering bodies for multiple applications.

40 T (36 mt)

60 T (55 mt)

70 T (63.5 mt)

100 T (90 mt)

150 T (134 mt)

200 T (177 mt)

250 T (227 mt)

320 T (290 mt)

400 T (362 mt)

MODEL

Body types available:
Coal Bodies, Coal Combo Bodies,
Overburden Bodies, Ore Bodies,
Heated Bodies

40RWB

60RWB

70RWB

100RWB

150RWB

200RWB

250RWB

320RWB

400RWB

**Capacities shown may vary depending on chassis size, weight distribution, and material density.*



Dump Bodies

OPTIMIZE EFFICIENCY, MINIMIZE RETENTION



Ground Force Dump Bodies are engineered and manufactured to increase your mine production and bottom-line profitability. These bodies are strategically designed the “right weight” and configuration for your specific mining application to ensure peak performance.

These bodies utilize an overlap shell design (patent pending), which lessens the amount of external structural

support required without compromising strength. The overlap design steps open towards the rear of the body allowing for quicker material discharge and reduced carry-back by elimination of leading edges.

Our engineering team utilizes finite element analysis to ensure strength, durability, and longevity of these bodies. This ensures life expectancy for the most challenging applications and extreme conditions.

DISCOVER THE BENEFITS

INCREASED PAYLOAD:

Lightweight designs provide increased production and bottom-line profitability, our strategic engineering is proven and allows for peak performance.

REDUCED CARRY BACK:

Engineered with an overlap shell design, lessening the amount of external structural support without compromising strength. The overlap design allows for quick release of material reducing carryback.

MULTIPLE APPLICATIONS & CONFIGURATIONS:

Purposely designed and manufactured for multiple applications, these bodies ship complete or in up to 4 pieces to reduce shipping costs.



STANDARD SPECIFICATIONS

- Innovative semi-elliptical dump bed design for maximum strength and quick material release
- Purpose designed & manufactured body for maximum payload
- Designed to minimize visual interference during operation
- Body constructed of 450 – 500 bhn material
- Sub-frame and bolsters constructed of 100 ksi material
- Reinforced and “dished shape” front head for strength & protection
- Engineered with the lowest possible center of gravity
- Reduced load impact on operator
- Sub-frame and bolsters constructed of 100 ksi material
- Heated bodies available for cold weather applications
- Rock ejector brackets available

FEATURES & BENEFITS

- Increased payload – Lightweight design allows for more payload
- Resists carry-back – Less tire wear / more material hauled
- Reduces spill rock – Less cleanup on haul roads and dumps
- Quick material discharge – Faster cycle times
- Centered load (due to semi-elliptical design)
- Design is operator friendly with large target area
- Less wear and tear on tires and struts with centered load
- Multiple shipping options that range from single up to 4 pieces, with sub-frame and rear pin bosses pre-mounted and line-bored before delivery
- Multiple liner packages with custom placement
- Full onsite evaluations available

Field Service & Training Guidance Available



Cable Handling TRUCKS & ATTACHMENTS

860 - 3,200 feet / 262 - 975 meters



AVAILABLE CABLE HANDLING TRUCK MODELS

Available in articulated and conventional chassis.

CLASS	CAPACITY	MODEL
Class 7 Heavy-duty single axle	1,300 F (396 M) of 2 in cable	CR
Heavy-duty single axle	1,300 F (396 M) of 2 in cable	CR
40 T (36 mt)	2,000 F (609 M) of 3.5 - 4 in cable	CR40F
40 T (36 mt)	3,200 F (975 M) of 3.5 - 4 in cable	CR40T

*Capacities may vary depending on custom requirements and material density.

AVAILABLE CABLE REELER ATTACHMENT MODELS

Heavy-duty pin-on attachment for prime movers

PRIME MOVER	MODEL
CAT 980	80CR
CAT 988	88CR
CAT 982	82CR
CAT 924	24CR
KOMATSU WA500	50CR
KOMATSU WA600	60CR
KOMATSU WA900	90CR



DRUM SPECIFICATIONS

Cable drum O.D.
72" (183cm)
Overall width:
43.375" (110.17cm)

ELECTRIC CABLE DRUM CAPACITY CHART

O.D. OF CABLE (in)	DRUM LENGTH (ft)	O.D. OF CABLE (in)	DRUM LENGTH (ft)
1.575 (4.00 cm)	3370 (1027 m)	3 (7.62 cm)	929 (283 m)
1.75 (4.45 cm)	2730 (832 m)	3.25 (8.26 cm)	791 (241 m)
2 (5.08 cm)	2090 (637 m)	3.5 (8.89 cm)	682 (208 m)
2.25 (5.72 cm)	1651 (503 m)	3.75 (9.53 cm)	594 (181 m)
2.5 (6.35 cm)	1338 (408 m)	4 (10.16 cm)	523 (159 m)
2.75 (6.99 cm)	1105 (337 m)		



Cable Handling Trucks and Attachments **EFFICIENT AND SAFE ELECTRIC CABLE HANDLING**



Ground Force offers multiple solutions for safely and precisely moving electric cable at your mine site. Purpose-built models, offer conventional, articulated, and specialty attachment configurations to allow for diverse options to suit your needs.

Whether you require a conventional or articulated Cable Reel Truck, both are engineered with a balanced center of gravity side to side and front to back, with easy operator functions allowing for safe and accurate cable placement. These bodies are designed with smart locations for service points, operator stations, remote operation, handrails, and anti-skid.

DISCOVER THE BENEFITS

PRECISION PLACEMENT:

Strategically engineered systems offer safe and even placement of electric cable both unloading and loading with adjustable speed settings and multiple configurations.

INCREASED SAFETY:

With maximum electric cable placement reach and increased visibility, all our systems offer the highest level of safety in the industry.

LOCAL DEALER SUPPORT:

Backed by OEM Mining machine support for enhanced reliability and service.

TRUCK SPECIAL FEATURES

- Heavy-duty welded steel structure assures longevity and durability
- Inclusion of flexible mount onto your body assures that chassis flex when needed, independently of the body
- Designed for single in-cab operation of hydraulically operated platform, allowing for precise cable placement away from traffic
- Level wind apparatus allows for even placement of cable loading on spool
- Fairlead system keeps cable properly placed on reel for efficient cable retrieval
- Oversized drums allow for less change-out intervals
- Variable speed control on drum radial piston motor and operator-controlled brake for full control over drum
- Adjustable reel speed
- Reel turn table rotates hydraulically 180 degrees
- Ground level storage boxes
- Enclosed and heated operator stations
- Wireless remote
- Self-loading reel
- R.O.P.S. structure over cab
- Custom loading arms

OPERATOR EASE AND SAFETY

- Single operator, precision cable placement, and forward moving loading and unloading of cable offer increased safety over conventional methods of cable placement
- Safety interlock system prevents chassis movement in a gear above 2nd unless turntable is locked in stowed position
- Rear view cameras
- Perimeter service access to the reel and reel support structure offers safe and efficient maintenance with spring loaded ManSaver® fall arrest bars installed at 2 access points
- Anti-Slip walkways and handrails
- Mine site lighting package

Field Service & Training Guidance Available

Our Ground Force Cable Reeler Attachments are designed to work with loaders and dozers for the safest and most efficient electric cable placement in the industry today.

With intuitive in-cab controls, unobstructed visibility, and increased reach over industry standards, our proven success delivering cable reel solution ensures the safest most cost-effective way to manage your electric cable.

ATTACHMENT SPECIAL FEATURES

- Clamp & Go drive system for efficient operation
- Heavy-duty excavator style layout boom with 270° rotational drive system
 - Boom reaches 26 ft (7.92 m) at ground level
 - Left or right hand mounts available
 - Cable grapple has continuous 360° rotation
- Microcontroller controls for proportional valve functions and chassis hydraulics
- Proportional control valve allows for precise movement
- Remote log-in with wireless connection for configuration changes, upgrades and diagnostics
- Approved OEM, in application load capacity
- Configurable to within height and width of loader or dozer to reduce shipping costs.





AVAILABLE LOWBOY TRAILER MODELS

MODEL

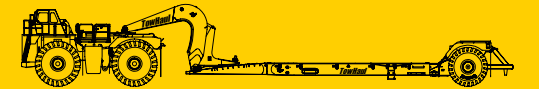
RLD 80



RGS 125

RGS 150

RGS 180

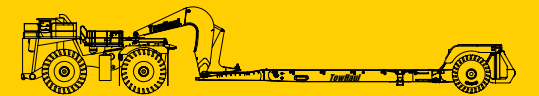


RGS 200

RGS 225

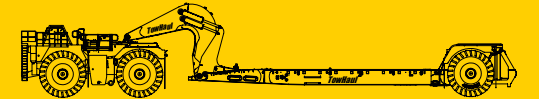
RGS 250

RGS 275



RGS 330

RGS 450



RGT 600

RGT 700



Lowboy TRAILERS

120 - 700 ton / 108 - 635 metric ton



Lowboy Trailers **STREAMLINED TOWING AND HAULING**



Ground Force partners with TowHaul in offering their low-profile modular Lowboy. It can haul most tracked equipment on any mine site and maximize the flexibility of your fleet.

Every aspect of the user experience was considered when creating this workhorse, from its modular design for easy

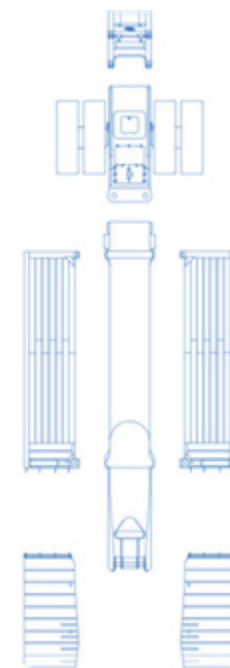
shipment and assembly to its single haul, truck-style axle, and wide-loading platform.

The innovative engineers at TowHaul create every trailer to meet the individual needs of the operation. Using customer feedback, products are continuously modified and improved to satisfy the changing needs of the industry and your mine site.



BENEFITS & FEATURES

- Front-loading for speed and safety
- Single axle for efficient hauling and easy maintenance
 - Dry drum brake option – simple, effective
 - Wet brake option – added performance as brakes are actively cooled with the innovative TowHaul ground-driven Brake Cooling System
- Low-profile ramps minimize breakover
- Modular design for easier shipping and handling
- Axle incorporated within footprint of the trailer deck to minimize overall width
- Optimized ground clearance for maximum mobility
- Wide loading platform with full width on the ground for stability
- Optional additional safety features, including walkways, handrails, augmented lighting systems, ladders, etc.
- Fully computerized control system



Modular design allows for easy, cost-effective shipping and assembly.

Multi-Purpose **Gooseneck**

Haul Truck Recovery

BENEFITS & FEATURES

- Multipurpose Gooseneck turns a single haul truck into a multi-function tool
 - Connect with and pull a TowHaul Lowboy
 - Tow disabled haul trucks with the Towing Conversion Package
 - Connect with and pull a Dragline Bucket Transporter
- Pairs with many brands and sizes of rigid-frame haul trucks
- Optional Towing Conversion Package includes:
 - Park Brake Release System
 - Auxiliary dump (buddy dump) system
 - Wireless remote control
 - Prime mover walkways and fenders
- The hydraulically activated Grab Hook allows for simple, fast connection to the Lowboy
- Hook-up time of less than 90 seconds
- Proven durability in harsh operating conditions

DISCOVER THE BENEFITS

FRONT-LOADING FOR SPEED & SAFETY:

The lowboy's front-loading design enhances the speed and safety of loading heavy equipment, reducing downtime and increasing productivity.

SINGLE AXLE FOR EFFICIENT HAULING:

The single axle design is not only efficient for hauling heavy loads but also simplifies maintenance, providing a cost-effective solution for transportation needs.

OPTIMIZED GROUND CLEARANCE:

With its optimized ground clearance, the TowHaul Lowboy ensures maximum mobility even in challenging terrains. Additionally, the wide loading platform provides full-width stability on the ground, making it a reliable choice for transporting large equipment.





STEMMING TRUCKS

Class 8 Tandem Axle

PROVEN SOLUTION FOR BLAST HOLE LOADING

Ground Force Stemming Bodies offer multiple configurations to meet your specific mine needs and are manufactured to endure rugged conditions and tough applications.

Our engineering department evaluates your application to ensure your Ground Force Stemming Truck is designed exactly as you need. We strive to provide a body that

extends the life of your chassis and is easily operable in various road conditions and work environments.

Our trucks are engineered with operator safety and efficiency in mind, with smart locations for service points, operator stations, plenty of storage, and durable components.

DISCOVER THE BENEFITS

IMPROVED FRAGMENTATION:

The trucks are designed to ensure proper stemming, which locks in the borehole when the powder column detonates. This confinement of the explosive's energy leads to better fragmentation.

INCREASED BOREHOLE SPACING:

With better fragmentation, it's possible to increase borehole spacing, which can lead to significant savings in drilling costs.

REDUCED EXPLOSIVE CONSUMPTION:

The improved stemming process results in decreased explosive consumption, leading to higher productivity and lower costs.



STANDARD FEATURES

- Capacities starting at 15 cu. yds. (11.5 cu. m)
- Body constructed of 3/16" carbon steel, mounted on 1/4" steel plate long-sills mounted to truck chassis with heavy-duty spring mounts
- Chain conveyor with rubber belting and UHMW wear pads bin and return track
- (2) In-line planetary gear box drive system with high-torque hydraulic motors
- Equipped with tensioning assembly to maintain proper chain tension
- Chain in bin is reversible
- Pressure-compensated, load-sensing piston pump
- Equipped with hydraulic tank with return line filtration
- In-cab and fender mounted tamper-proof speed controls for drag chain, cross conveyor, and vibrator
- Sloped bed is lined with UHMW to improve material flow and provide wear resistance
- Body is equipped with steel FOPS to protect cab
- Rear access platform with shovel holder
- Minesite lighting at discharge point
- Backup camera

CROSS CONVEYOR

- Cross conveyor hydraulically extends 30 inches on drivers' side
- Industrial-duty 12" rubber, multi-layer, conveyor belt
- Replaceable, industry-standard idler rollers, with sealed bearings
- Drive roller is vulcanized rubber coated, idler is non vulcanized
- Protective guarding around rollers and drive for safety

GRIZZLY SCREEN

- (2) Hydraulically driven grizzly screens to filter oversized rocks and frozen material (90-degree lift)
- Equipped with (4) hydraulic vibrators in strategic locations
- Vibrator controls have speed control with individual operation
- Momentary-action switch to prevent prolonged vibrator operation

Field Service & Training Guidance Available





MECHANIC SERVICE/WELDER TRUCKS

Class 7-9 Tandem Axle

RUGGED, RELIABLE AND READY TO WORK

Ground Force Mechanic Service and Welder Bodies are custom-engineered to meet the demands of your mine field service program and manufactured to endure rugged conditions and tough applications.

Our engineering department evaluates your application to ensure your Ground Force Mechanic Service or Welder Truck is equipped with all the tools you need to get the job done. We work with you to understand your field service needs and design your truck with a safe, efficient configuration. We strive to provide a body that offers longevity to your chassis and is sensitive to tough road conditions.

Our trucks are engineered with operator safety and efficiency in mind, with compact designs, state-of-the-art components, and ample storage to keep your tools under lock and key.

BODY FEATURES

- Body shell is 10 gauge steel
- Compartments are fully welded
- Doors are 1/2" steel with heavy-duty door hinges, cam action latches, door seal and gas-charges door closures
- Compartments with toolboxes, adjustable racks and rollout tool drawers on roller glides
- Horizontal over-wheel compartments have adjustable shelves and full-extension rollout trays on roller guides with steel parts bins and dividers
- Oxy/acetylene compartment
- Spring rewind hose reel
- Rear work platform with 3/8" plate steel top deck
- Headache rack and fold-down tailgate
- Hydraulic crane with stabilizers – includes tethered or wireless pendant
- Multiple high output DC welding machines available

Field Service & Training Guidance Available

DISCOVER THE BENEFITS

DURABILITY FOR TOUGH JOBS:

Built with time-proven off-road, mine-site service bodies, these trucks are designed to provide years of reliable service in the toughest applications.

OPTIMIZED FOR MOBILE MAINTENANCE:

The trucks are equipped with features that take mobile maintenance to a new level, including fully welded compartments, heavy-duty door hinges, and gas-charged door closures.

CUSTOMIZATION AND CAPACITY:

Offering a variety of standard models and options, these trucks can be tailored to meet specific operational requirements, ensuring that they fit the unique needs of each job.

SPECIALTY EQUIPMENT

Class 1 - 240 ton (227 metric ton)

WHEN SOLUTIONS DEMAND INNOVATION

Ground Force engineers and builds a variety of Specialty Equipment for customers around the globe. From Carbon Tipper Trucks to custom Haulers, we engineer and manufacture to support your specific application.

Our bodies are built with standard specifications to allow for consistency throughout your fleet. Our specialty bodies are designed and built to meet your needs based on chassis requirements or niche applications. These bodies as unique as they are, remain true to the high-quality manufacturing that you receive with other Ground Force products. Our design allows all the special features you require while keeping operator ease and safety the utmost priority.



Mobile Fuel Container



DISCOVER THE BENEFITS

OPTIMIZED PERFORMANCE:

Custom engineering to specific mining conditions and requirements ensures the optimal performance of your specialty solution.

ECONOMIC ADVANTAGES:

Custom solutions often result in a lower total cost of ownership by strategically focusing on one main objective.

LOCAL DEALER SUPPORT:

Backed by OEM Mining machine support for enhanced reliability and service.

PROVIDING EXCELLENCE IN SERVICE:

THE GOLD STANDARD IN EQUIPMENT LIFECYCLE MANAGEMENT

World-class service is paramount in the mining industry, particularly concerning the installation of equipment, training of operators, and ongoing technical support. Proper installation ensures that equipment operates at peak efficiency, reducing downtime and preventing costly repairs. Training operators are equally crucial; skilled personnel can maximize the machinery's potential, maintain safety standards, and adapt to changing conditions. Lastly, consistent technical support throughout the equipment's lifespan not only troubleshoots inevitable issues but also updates and optimizes systems to keep pace with technological advancements.

Together, we offer these services to enhance productivity, extend the life of the equipment, and ensure a safer working environment, ultimately contributing to your mine's profitability and sustainability.

GROUND FORCE OPERATOR TRAINING

Our Training Programs are meticulously crafted to be delivered both in-person and virtually, reflecting our commitment to the pivotal role of education in the modern era. We are equipped to accommodate the preferred training modality that aligns with your operational requirements.

Utilizing an array of instructional materials, including videos, comprehensive workbooks, and detailed presentations, we facilitate an optimal learning journey. We supply both physical and electronic versions of our training materials, ensuring that your team is well-equipped with the necessary resources for success. Our curriculum is designed to impart essential skills and insights for the proficient inspection, operation, and maintenance of your equipment. We offer 3 training programs.

1. On-site
2. Virtual
3. Train-the-trainer

Training: Advance your operational expertise with our specialized training, designed to enhance the safety and efficiency of your Ground Force equipment management.

GROUND FORCE SUPERVISION OF INSTALLATION AND COMMISSIONING

Ground Force installation and commissioning play a crucial role in ensuring the effective operation of your mining support equipment. We will begin by exploring our benefits:

Installation:

Ground Force installation and/or supervision ensures that your equipment is correctly positioned, assembled, and installed according to our engineering specifications, giving you the best operational efficiency available. This also reduces the risk of malfunctions throughout the life of the equipment and keeps your operator safe from accidents.

Professionally installed equipment operates more efficiently, minimizing downtime and maximizing productivity, while extending equipment lifespan.

Commissioning:

Our Ground Force commissioning verifies that your equipment operates as intended. It tests to demonstrate individual components' proper function and ensures integrated subsystems work together effectively.

For our control systems, commissioning is critical. It guarantees seamless integration and performance and ensures the investment rationale (cost, quality, reliability, safety) is met.

Commissioning stress tests can resolve communication issues between new equipment components and existing systems, giving your rebuild the best return.



+1 (208) 425-1119

service@gfworldwide.com

OPTIMIZE PERFORMANCE:

*YOUR SOURCE
FOR ON-DEMAND
GROUND FORCE
EQUIPMENT PARTS*

We recognize the critical nature of timely replacement part availability. Our dedicated Parts & Product Support Representatives are on standby to facilitate your parts orders and provide expert technical guidance, ensuring the most efficient operation of your equipment.

Our Parts Distribution Center (PDC) carries a comprehensive stock of maintenance components for a vast array of our products, guaranteeing immediate dispatch and global delivery. Be it an individual component, an accessory ensemble, or a complete parts kit, our commitment is to expedite your order and get your equipment back to work. The superior quality of our parts, combined with the expertise of our Parts & Product Support Representatives, distinguishes our service excellence.



GROUND FORCE TECHNICAL RESOURCES

At Ground Force, we understand that reliable performance from your mining equipment is crucial to your operation's success. That's why our dedicated team of technical experts is available around the clock to provide you with comprehensive support and troubleshooting assistance. Whether you're facing a complex challenge or have a simple query, we are committed to ensuring that your equipment operates at peak efficiency.

Connect Today: Don't hesitate to reach out to us for any technical guidance or hands-on assistance you require. Your productivity is our priority, and we're here to help every step of the way.

Direct Line: +1 (208) 262-4731

GROUND FORCE EQUIPMENT REBUILDS

Rebuilding your Ground Force equipment is a strategic investment that extends the life of your assets and enhances operational efficiency. By opting for a rebuild, you're not only ensuring that your equipment meets the latest safety and performance standards, but you're also benefiting from improved reliability and reduced downtime. A comprehensive rebuild can restore your equipment to a 'like-new' condition, offering a cost-effective alternative to purchasing new. Moreover, it allows for the integration of the latest technological advancements, increasing productivity and reducing environmental impact.

With a rebuild, you can expect a significant improvement in the lifecycle value of your equipment, ensuring that it continues to deliver peak performance in the most demanding of conditions.

Rebuilding: a smart choice for maximizing the return on your investment in mining equipment.



+1 (208) 664-9291

partsales@gfworldwide.com



6001 E. Seltice Way
Post Falls, Idaho 83854 U.S.A.



Solutions@gfworldwide.com



+1 (208) 664-9291



gfworldwide.com