

# WATER PULLS

*Designed for CAT Wheel Tractor Scraper*

5,000 - 12,000 gallons / 18,927 - 45,424 liters



WORK READY AND  
BUILT TO LAST

**GROUND FORCE**  
WORLDWIDE  
WORLD'S FINEST MINE SUPPORT EQUIPMENT



# WATER PULLS

*Designed for CAT Wheel Tractor Scraper*

## AVAILABLE WATER PULL MODELS

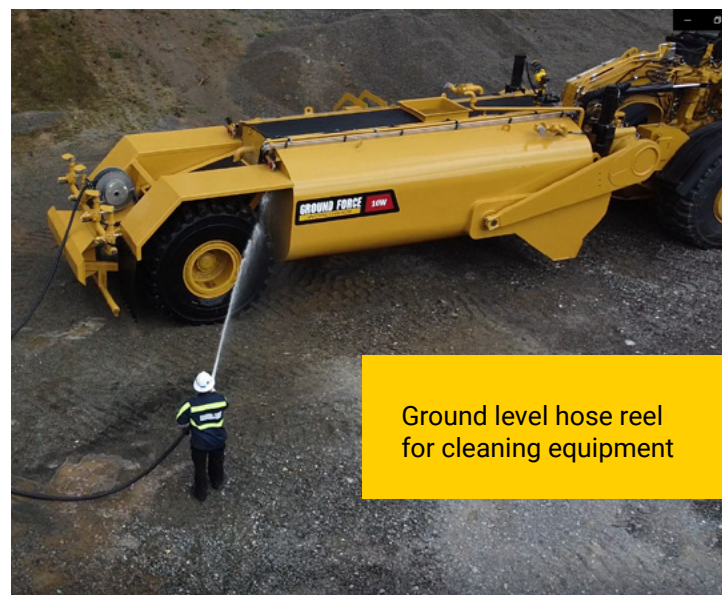
CLASS	CAPACITY	MODEL
CAT 613	5,000 G (18,927 L)	5W
CAT 611/615	6,000 G (24,600 L)	6.5W
CAT 621/623	8,000 G (30,283 L)	8W
CAT 631/637	10,000 G (37,854 L)	10W
CAT 651/657	12,000 G (45,424 L)	12W

*Explore a range of special features, many of which are included as standard with our equipment. Capacities vary based on chassis size and weight distribution.*

Ground Force Water Pulls are designed to be work-ready and user-friendly. Built for heavy construction and mining applications they will tackle all your dust suppression, fire-fighting, and general water truck needs.

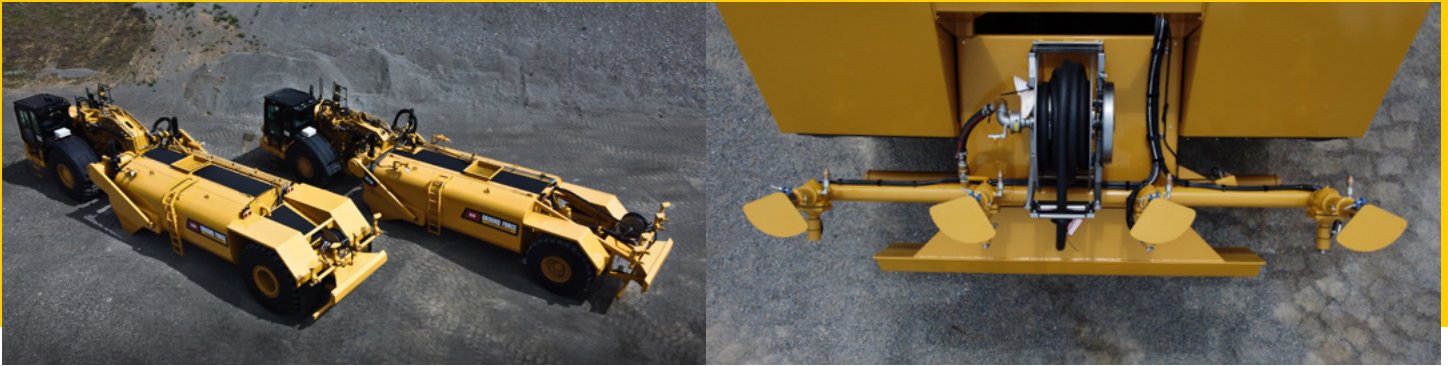
Engineered to utilize CAT Wheel Tractor Scrapers (or similar), these low-profile tanks are designed with the same quality and innovation as all Ground Force water tanks but offer large volumes of water in a specialty application.

The Ground Force Water Control System (WCS) comes standard with all water solutions offering clear and simple in-cab digital controls, strategic placement of critical components, and wireless remote operation if desired along with numerous other features.



Ground level hose reel for cleaning equipment





## TANK SPECIFICATIONS

- Water Capacity: 5,000 - 12,000 gal (18,927 – 45,424 L)
- Built for heavy-duty mining applications
- Utilizes CAT Wheel Tractor Scraper or similar
- Dual-radius elliptical design
- Endo-skeleton, designed with structural I-beams for extended life and stability
- Available in non-drop tank design or heavy-duty reverse moldboard with brake saver drop arm design
- Full baffled; longitudinal and transverse
- Custom engineered tub-surge control system
- Sump with drain for cleanout
- Sealed weatherproof wiring
- LED tail, stop and turn lights
- Optional fire foam system

## OPERATOR EASE AND SAFETY

- Ground Force Water Control System (WCS)
- Designed to achieve lowest center of gravity
- Manway with safety grate
- Ladder with safety handrails
- Anti-skid top walkway with PPE tie-off

*Field Service & Training Guidance Available*



## WATER CONTROL SYSTEM - WCS

- Externally mounted, high performance water pump
- Digital in-cab control display
- Programmable menu with (6) preset spray settings
  - Intermittent spray settings for wet-strip, dry-strip watering
  - On-the-fly, one-touch control for quick on/off functionality
  - Backlit LCD screen for low-light operations
- Integration of an extensive range of options
  - Rear spray bar with (4) staggered fan-sprays
  - Side sprays, hose reels, water cannons, & gravity dump





For more information  
contact us online at  
[gfworldwide.com](http://gfworldwide.com).



6001 E. Seltice Way  
Post Falls, Idaho 83854 U.S.A.



[Solutions@gfworldwide.com](mailto:Solutions@gfworldwide.com)



+1 (208) 664-9291



[gfworldwide.com](http://gfworldwide.com)